

# BEACH REAL ESTATE GUIDE

Sunset Beach ■ Ocean Isle Beach ■ Calabash ■ Carolina Shores

TOP COMMUNITY INFORMATION • FEATURED REAL ESTATE • TIDE CHART  
UPCOMING EVENTS • ACTIVITIES • REAL ESTATE MARKET INFO



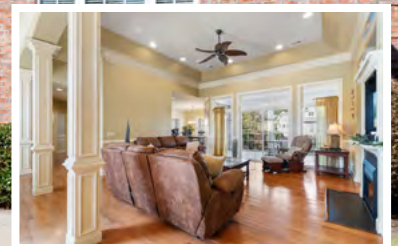
## NEW LISTINGS

**267 SEDGEFIELD PLACE SW | OCEAN RIDGE PLANTATION**  
**OFFERED AT: \$549,900**



## NEW LISTINGS

**6584 WILLOWBANK PLACE SW | OCEAN RIDGE PLANTATION**  
**OFFERED AT: \$675,000**





# SILVER COAST PROPERTIES TEAM



Bill Anderson



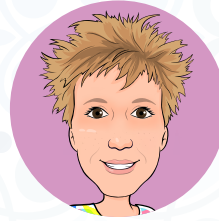
Joy Anderson



Darren Bouley



Kimberly Lank



Colleen Teifer



Makayla Fenske

**S**ilver Coast Properties is a full-service real estate brokerage providing sales and marketing support to southeastern North Carolina residents, as well as comprehensive buyer support including property evaluation, negotiations, and acquisition. Our commitment to clients has resulted in a sterling reputation with thousands of satisfied real estate buyers and sellers.

## SELLER SERVICES

Silver Coast Properties is more than a real estate company, we are your technology and marketing partner. We provide our real estate listing clients with access to the latest in cutting-edge technology to make their property stand out from the competition.

More than 98% of would-be buyers begin by investigating communities and real estate online. We capitalize on this trend for our clients by employing the latest 3-D virtual tour technology, professional photography, aerial photography and custom website development for each home.

Many large national brokerages flout their size as the reason you should list your property with them. The reality is the Internet has given the advantage to small dynamic companies. In fact, the data indicates that less than 10% of the time, properties are sold by the same listing company.

Our boutique-style brokerage provides the individualized service that our clients expect from a business partner. Silver Coast Properties possesses the knowledge and market acumen to communicate the benefits of your home to would-be buyers.

Many firms will enter your home in the MLS and wait for a buyer. We are actively engaged in the process of marketing your home online and through a network of marketing channels. Boasting more than 20 top ranking websites, we are uniquely poised to market and sell your property.

*Call us at (800) 975-6024 for a confidential, no-pressure discussion about our services and market conditions.*

## BUYER SERVICES

Our area offers a diverse collection of real estate options appealing to individuals and families interested in a full-time residence, second home or beach getaway. The real estate products support a variety of needs and budgets. We are here to help you understand the myriad of options and

### New Home Construction

Sunset Beach is a desirable seaside location and continues to offer new home construction on both privately owned and developer owned lots. We are here to support you throughout the new home construction process. Building a home can be a very rewarding experience, allowing the homeowner the ability to tailor the home to their tastes and lifestyle. Our team is here to offer as much or as little assistance as you need based on your knowledge, experience comfort level with building a home. The Silver Coast Properties team provides the same assistance as if the owner were purchasing a pre-owned home. And, like a pre-owned home, our agency is compensated by the seller/builder to help both parties achieve their desired goals.

### Custom Home Building Lots

Silver Coast Properties provides essential services to help our clients identify, evaluate, and purchase a building lot. Our experienced team will help you identify the best fit for your needs and budget, as well as avoid those areas that are more susceptible to flooding, have disadvantaged locations or may require higher lot preparation and construction costs.

We support our clients with reputable builder recommendations and hold your hand through the building process. With more than a decade of experience helping with new construction our team is here to be a pivotal ally in turning your custom dream home into a reality.

Our professional support includes, but is not limited to:

- Identifying the perfect lot
- Sourcing a qualified home designer/architect
- Evaluating and selecting a local builder
- Providing recommendations for home features based on our years of experience

- Coordinating a transition rental while you build—depending on your needs

### Pre-owned Homes, Townhouses and Condominiums

Pre-owned homes are a convenient option for our clients that don't have the time to build or don't wish to go through the building process. The availability of pre-owned homes varies through the year with the spring and fall historically being the more active real estate markets. However, the expectation of a busy season has changed in the last few years because of a steady stream of new residents investigating and falling in love with our desirable seaside location.

*Call us at (800) 975-6024 for a confidential, no-pressure discussion about our services and market conditions.*

# TOP LOCAL COMMUNITIES

## SUNSET RIDGE

Ocean Isle Beach, North Carolina



### COMMUNITY AMENITIES

- Walking trail
- Sidewalks
- Outdoor pool
- Fitness center
- Owners' clubhouse
- Owners' lounge
- Clubs & organizations
- Activity room

### COMMUNITY PROFILE

<b>Total Build-Out:</b> 400	<b>Local Beach:</b> Sunset Beach
<b>Completed Homes:</b> 400	<b>Time to Beach:</b> 5 Minutes
<b>Total Acreage:</b> 300	<b>Real Estate Offered:</b> Homes, Townhouse
<b>Website:</b> <a href="http://www.sunsetridgenchomes.com">www.sunsetridgenchomes.com</a>	<b>Starting Home Prices:</b> High \$300s
<b>2022 Annual HOA Fee:</b> \$2,040	<b>Starting Lot Prices:</b> N/A
<b>County Taxes</b> (per \$100k): \$345	<b>Golf Carts Permitted</b> Yes (public roads)
<b>City Taxes</b> (per \$100k): N/A	<b>Starting Price Townhouse:</b> High \$200s
<b>Local Hospital:</b> Novant/Brunswick Hospital	<b>Hospital Distance:</b> 12 Miles
<b>Gated Neighborhood:</b> No	<b>HOA Includes Landscaping:</b> Yes

## SANDPIPER BAY

Sunset Beach, North Carolina



### COMMUNITY AMENITIES

#### Single Family Homeowner Amenities:

- Private residents center
- 2 tennis/pickleball courts
- Outdoor pool
- Residents' lounge
- Clubs & organizations
- Outdoor spa
- Fitness room

#### Condominium Owner Amenities:

- 2 outdoor pools
- Bocce courts
- Tennis court
- Screened Lanai
- Picnic area

#### All Residents & Public:

27-holes of golf  
Golf clubhouse with dining

### COMMUNITY PROFILE

<b>Total Build-Out:</b> 300 Homes   150 Condos	<b>Local Beach:</b> Sunset Beach
<b>Completed Homes:</b> 100% Complete	<b>Time to Beach:</b> 10 Minutes
<b>Total Acreage:</b> 250	<b>Real Estate Offered:</b> Homes, Condominiums
<b>Website:</b> <a href="http://www.SandPiperBayRealEstate.com">www.SandPiperBayRealEstate.com</a>	<b>Starting Home Prices:</b> High \$300s
<b>2022 Annual HOA Fee:</b> \$840 (Homes)	<b>Starting Lot Prices:</b> N/A
<b>County Taxes</b> (per \$100k): \$345	<b>Starting Price Condo:</b> Low \$200s
<b>City Taxes</b> (per \$100k): \$160	<b>Water/Sewer:</b> Public/Public
<b>Local Hospital:</b> McLeod Seacoast Hospital	<b>Hospital Distance:</b> 15 minutes
<b>Gated Neighborhood:</b> No	<b>HOA Includes Landscaping:</b> No



# TOP LOCAL COMMUNITIES

## OCEAN RIDGE PLANTATION

Ocean Isle Beach, North Carolina



### COMMUNITY AMENITIES

- 72 holes of golf
- Oceanfront beach club
- New Community Center Planned
- Indoor pool
- Fitness center
- Outdoor pool with lap lanes
- Owners' clubhouse
- 65 Clubs & organizations
- Walking & biking trails
- Poolside grilling pavilion
- Nature park & pavilion
- Owners' lounge
- Horseshoe pits
- Bocce ball court
- Tennis/pickle ball courts
- RV/Boat storage
- Activity rooms
- Fishing lake
- Steam room & dry Sauna
- Outdoor whirlpool

### COMMUNITY PROFILE

<b>Total Home Build-Out:</b>	2,800	<b>Local Beach:</b>	Sunset Beach
<b>Completed Homes:</b>	1,000-1,050	<b>Time to Beach:</b>	5 Minutes
<b>Approx. Total Acreage:</b>	2,800	<b>Real Estate Offered:</b>	Homes, Lots
<b>Website:</b>	www.OceanRidgePlantationHomes.com	<b>Starting Home Prices:</b>	Mid \$500s
<b>2023 Annual HOA Fee:</b>	\$2,360	<b>Starting Lot Prices:</b>	\$20s
<b>County Taxes (per \$100k):</b>	\$345	<b>Utilities:</b>	Public
<b>City Taxes (per \$100k):</b>	N/A	<b>Pools Allowed:</b>	Yes
<b>Local Hospital:</b>	Novant/Brunswick Hospital	<b>Hospital Distance:</b>	12 Miles
<b>Set Builder List:</b>	No	<b>Required Time to Build:</b>	No
<b>Golf Cart Friendly:</b>	No	<b>HOA Includes Lawn Care:</b>	No

## SEA TRAIL PLANTATION

Sunset Beach, North Carolina



### COMMUNITY AMENITIES

- 54 Holes of golf
- On-site dining
- Private beach parking
- Tennis/Pickleball courts
- Outdoor pools
- Indoor pool
- Fitness center
- Owners' clubhouse
- Owners' lounge
- Clubs & organizations
- Activity room
- Bocce ball courts
- Exercise studio
- Indoor jacuzzi
- Dry sauna
- Community library

### COMMUNITY PROFILE

<b>Total Build-Out:</b>	2,200	<b>Local Beach:</b>	Sunset Beach
<b>Completed Homes:</b>	1,800	<b>Time to Beach:</b>	5 Minutes
<b>Total Acreage:</b>	2,000	<b>Real Estate Offered:</b>	Homes, Townhouses, Building Lots, Condominiums
<b>Website:</b>	www.seatrailhomes.com	<b>Starting Home Prices:</b>	Mid \$300s
<b>2023 Annual HOA Fee:</b>	\$865	<b>Starting Lot Prices:</b>	\$50s
<b>County Taxes (per \$100k):</b>	\$345	<b>Starting Price Condo:</b>	High \$200s
<b>City Taxes (per \$100k):</b>	\$160	<b>Starting Price Townhouse:</b>	Mid \$300s
<b>Local Hospital:</b>	Novant/Brunswick Hospital	<b>Hospital Distance:</b>	12 Miles
<b>Gated Neighborhood:</b>	No	<b>Golf Carts Permitted on Roads:</b>	Yes

# TOP LOCAL COMMUNITIES

## CAMERON WOODS

Ocean Isle Beach, North Carolina



### COMMUNITY AMENITIES

- Community Outdoor Pool
- Community Clubhouse
- Spacious Screened Lanai
- Two Pickleball Courts
- Fitness Room
- Lounge Area with Seating and Fireplace
- Clubhouse Kitchen
- Gated Entrance
- Trail (planned)
- 3 Miles to Area Beaches
- Golf Cart Friendly
- Dog Park (planned)

### COMMUNITY PROFILE

<b>Total Build-Out:</b>	140	<b>Local Beach:</b>	Ocean Isle Beach
<b>Completed Homes:</b>	115	<b>Time to Beach:</b>	3-4 Miles
<b>Estimate Acreage:</b>	90	<b>Real Estate Offered:</b>	New Construction, Townhouses, PreOwned Homes
<b>Website:</b>	www.cameronwoodsnc.com	<b>Starting Home Prices:</b>	Mid \$300s
<b>2023 Annual HOA Fee:</b>	\$1,440	<b>Golf Cart Friendly:</b>	Yes
<b>County Taxes (per \$100k):</b>	\$345	<b>Water Source:</b>	Municipal
<b>City Taxes (per \$100k):</b>	N/A	<b>Sewer Source:</b>	Municipal
<b>Local Hospital:</b>	Novant/Brunswick Hospital	<b>HOA Includes Lawn Care:</b>	No
<b>Hospital Distance:</b>	12 Miles	<b>Gated Neighborhood:</b>	Yes

## DEVAUN PARK

Calabash, North Carolina



### COMMUNITY AMENITIES

- Community Clubhouse
- Billiards Table & Game Tables
- Outdoor Pool
- Fitness Room
- Clubs & Organizations
- Owners' Lounge
- Walking & Biking Trails
- Community Park
- Activity Lawn
- Convenient to Area Beach
- Convenient to Restaurants & Shopping

### COMMUNITY PROFILE

<b>Total Build-Out:</b>	415	<b>Local Beach:</b>	Sunset Beach
<b>Completed Homes:</b>	315	<b>Time to Beach:</b>	5 Minutes
<b>Total Acreage:</b>	300	<b>Real Estate Offered:</b>	Homes and Building Lots
<b>Website:</b>	www.devaunparkrealestate.com	<b>Starting Home Prices:</b>	Low \$400s
<b>2023 Annual HOA Fee:</b>	\$1,200	<b>Starting Lot Prices:</b>	\$30s
<b>County Taxes (per \$100k):</b>	\$345	<b>Time to Build:</b>	None
<b>City Taxes (per \$100k):</b>	N/A	<b>Hospital Distance:</b>	7 Miles
<b>Local Hospital:</b>	McLeod Hospital	<b>Septic/Sewer:</b>	Sewer
<b>Gated Neighborhood:</b>	No	<b>Water Source:</b>	Public



# FEATURED REAL ESTATE

HOME | 2105 CASTLEBRIDGE COURT NW | SPRING MILL PLANTATION

CONTACT: COLLEEN TEIFER • CELL: 609.868.2393 • EMAIL: CAROLINACOLLEEN@GMAIL.COM



Price: \$389,967  
Heated Sq Ft: 1,698  
Bedrooms: 3  
Baths: 2

This cute home in the active community of Spring Mill Plantation is a must see! You will be wowed by the open and airy floor plan. The large kitchen has plenty of counter space, room for an eat-in table, and stools at the bar area. Adjacent to that, the dining area is open to the living room, which is in turn open to the sunroom. This seller has made some nice updates and improvements so you won't have to! Freshly painted with the addition of a sunroom, large patio, and gutters, this home is ready to go for a new set of owners. The primary bedrooms is a very comfortable size, and separate from the two guest bedrooms. The back yard is quite private, buffered by a wooded area. You can entertain until your heart's delight on this huge added patio too! Spring Mill Plantation is a very friendly and active community located in the town of Calabash. You are a stone's throw from the seafood restaurants there, along with the shops and stores.

[LEARN MORE: WWW.SPRINGMILLREALESTATE.COM](http://WWW.SPRINGMILLREALESTATE.COM)

LOT | 615 LAKESHORE DRIVE | TWIN LAKES

CONTACT: BILL ANDERSON • CELL: (910) 880-9475 • EMAIL: LIVECOASTALNC@GMAIL.COM



Price: \$178,500  
Acre: .34  
Setting: Golf & Water  
View

Waterfront lot in the Twin Lakes area of Sunset Beach! Home sites on Twin Lakes are extremely rare, but one that is lake front with the BONUS of intracoastal waterway views, views of Sunset Beach island, AND golf/marsh views truly offers a one of a kind opportunity for a unique home build. If golf is a priority, this lot is located within walking distance of the Oyster Bay Golf clubhouse while the area boasts over a dozen golf courses within a 5 miles radius. Or if the beach is what you are after, this lot is a three minute drive to the bridge which takes you over to award winning Sunset Beach which was ranked the 4th best beach in the world by National Geographic in 2017. Don't wait years for another lake front lot to become available!

[LEARN MORE: WWW.SILVERCOASTNC.COM](http://WWW.SILVERCOASTNC.COM)



## HOME | 267 SEDGEFEILD PLACE SW | OCEAN RIDGE PLANTATION

**CONTACT: BILL ANDERSON • CELL: (910) 880-9475 • EMAIL: LIVECOASTALNC@GMAIL.COM**



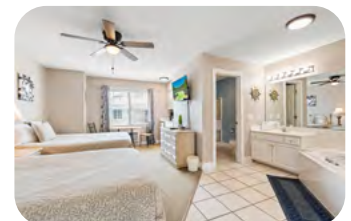
**Price: \$549,900**  
**3 Beds | 2 Baths**  
**Setting: Golf & Water Views**

Golf and water views are ready for you with this one level home in prestigious Ocean Ridge Plantation! Remodeled top to bottom, this home boasts a new roof in 2023, a new driveway in 2022, new kitchen granite in 2022 and fresh paint and flooring throughout. Bordered on two sides by water the home only has one neighboring house making the setting ideal for sitting on your back deck or your screened in porch. PLUS you can let the pets play care free in the fenced in back yard (which is a feature hard to find in Ocean Ridge!) The wide open floor plan with an over sized kitchen island offers great flexibility for all sorts of gatherings.

**LEARN MORE: [WWW.OCEANRIDGEPLANTATIONHOMES.COM](http://WWW.OCEANRIDGEPLANTATIONHOMES.COM)**

## CONDO | BRUNSWICK PLANTATION | 330 S MIDDLETON DR NW #1207

**CONTACT: COLLEEN TEIFER • CELL: 609.868.2393 • EMAIL: CAROLINACOLLEEN@GMAIL.COM**



**Price: \$209,000**  
**Approx. Sq/ft: 1,076**  
**Bedrooms: 2**  
**Baths: 2**  
**Year Built: 1999**

If you have been waiting for a light, bright, airy and open, furnished condo in an absolutely beautiful golf community, then you are in luck! This third floor condo in the Commons I section of Brunswick Plantation is ready to go for the next occupant. These conscientious owners have done several updates including a new refrigerator, stove, microwave, paint, lights and fans in 2022. The inner workings of the air handler were replaced in 2023 and the condenser is approximately 3 years old. This is a perfect option for either an investment property or vacation property, as it is truly lock and go. The HOA dues include master insurance, exterior maintenance, landscaping, monthly pest control, water, sewer, cable, trash pickup and internet. The unit contains a main villa and a mini-suite, which could be rented separately if desired. Each unit has its own entrance.

**LEARN MORE AT: [WWW.CALABASHHOMES.COM](http://WWW.CALABASHHOMES.COM)**



CONTACT: DARREN BOULEY • CELL: 910.431.7692 • EMAIL: [DARREN@SILVERCOASTNC.COM](mailto:DARREN@SILVERCOASTNC.COM)



Price: \$675,000  
4 Beds | 2.5 Baths  
Year Built: 2003  
Approx. Sq Ft: 2,752

This well maintained brick home exudes elegance and comfort with its classic architectural design and lush landscaping. Upon entering, you are greeted by the warmth of welcoming hardwood floors that flow seamlessly throughout the main living areas. The spacious living room is an entertainer's delight, featuring a cozy fireplace, built-in shelving, and abundant natural light that accentuates the room's high ceilings and fine finishes. The heart of the home, the kitchen, is a culinary haven with its sleek counter-tops, ample cabinetry, counter seating and double oven. It opens up to a casual dining area, making it perfect for morning breakfasts or evening gatherings. Retire to the serene master bedroom where tranquility meets style. For more information please visit our website or contact listing agent.

LEARN MORE: [WWW.OCEANRIDGEPLANTATIONHOMES.COM](http://WWW.OCEANRIDGEPLANTATIONHOMES.COM)

## TWO GREAT LOTS LOCATED IN OCEAN RIDGE PLANTATION!

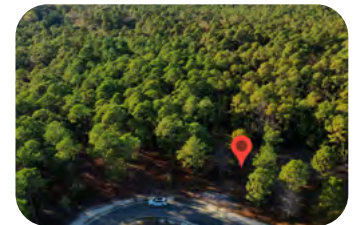
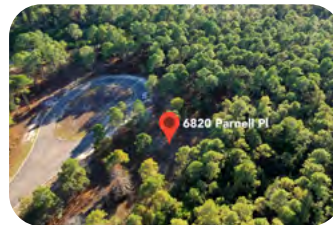
### 6815 PARNELL PLACE SW



Price: \$34,900  
Acre: .46

This nearly ½ acre lot provides lots of flexibility for building your custom home. A great opportunity to secure a future dream home location in southeastern North Carolina's premier golf and beach community at a very reasonable price. Homes in this neighborhood must be a minimum of 2,200 heated square ft.

### 6820 PARNELL PLACE SW



Price: \$43,500  
Acre: .41

Gorgeous, large building lot that backs to a private nature preserve area. Great opportunity to secure a future dream home location. Ocean Ridge Plantation is coastal NC's top golf and beach community offering 4 championship golf courses, oceanfront beach club, community garden, 3,500 sq/ft outdoor pavilion, indoor & outdoor pool, fitness room, more than 70 clubs, miles of walking trails, tennis/pickleball courts, and the highly anticipated Ridge Center.

LEARN MORE: [WWW.OCEANRIDGEPLANTATIONHOMES.COM](http://WWW.OCEANRIDGEPLANTATIONHOMES.COM)



# LAND FOR SALE

## LAND • OCEAN RIDGE PLANTATION

6952 Rosebury Ct, Ocean Isle Beach



**Price:** \$32,900  
**Acres:** .48  
**MLS ID:** 100387276  
**Status:** Active  
**Contact:** Bill Anderson  
**Cell:** (910) 880-9475  
livecoastalnc@gmail.com

## LAND • OCEAN RIDGE PLANTATION

132 Windsor Circle SW, Ocean Isle Beach



**Price:** \$69,000  
**Acres:** .33  
**MLS ID:** 100395665  
**Status:** Active  
**Contact:** Bill Anderson  
**Cell:** (910) 880-9475  
livecoastalnc@gmail.com

## LAND • OCEAN RIDGE PLANTATION

525 Stratton Place SW 34, Ocean Isle Beach



**Price:** \$45,900  
**Acres:** 0.37  
**MLS ID:** 100254470  
**Status:** Active  
**Contact:** Colleen Teifer  
**Cell:** (609) 868-2393  
carolinacolleen@gmail.com

## LAND • OCEAN RIDGE PLANTATION

737 Highgate Place SW, Ocean Isle Beach



**Price:** \$29,000  
**Acres:** .20  
**MLS ID:** 100410423  
**Status:** Active  
**Contact:** Bill Anderson  
**Cell:** (910) 880-9475  
livecoastalnc@gmail.com

## LAND • DEVAUN PARK

9274 Hutton Heights SW, Calabash



**Price:** \$280,000  
**Acres:** 0.61  
**Setting:** Riverfront  
**MLS ID:** 100389482  
**Status:** Active  
**Contact:** Darren Bouley  
**Cell:** (910) 431-7692  
darren@silvercoastnc.com

## LAND • OCEAN RIDGE PLANTATION

742 Highgate Place SW, Ocean Isle Beach



**Price:** \$35,000  
**Acres:** .23  
**Setting:** Water View  
**MLS ID:** 100407449  
**Status:** Active  
**Contact:** Darren Bouley  
**Cell:** (910) 431-7692  
darren@silvercoastnc.com

## LAND • DEVAUN PARK

9270 Hutton Heights Way SW, Calabash



**Price:** \$240,000  
**Acres:** 0.68  
**Setting:** Riverfront  
**MLS ID:** 100389483  
**Status:** Active  
**Contact:** Darren Bouley  
**Cell:** (910) 431-7692  
darren@silvercoastnc.com

## LAND • DEVAUN PARK

9269 Devaun Pointe Circle, Calabash



**Price:** \$199,900  
**Acres:** 0.42  
**MLS ID:** 100392301  
**Status:** Active  
**Contact:** Kimberly Lank  
**Cell:** (910) 209-2342  
kimberly@silvercoastnc.com

# EVENTS & ACTIVITIES

Join the fun this winter and enjoy some local flavor at southeastern North Carolina's events and activities.

## PAWS-ABILITY SANTA PAWS CONCERT

Date: Friday, Nov. 24, 2023

Time: 1:00 PM - 4:00 PM

Location: Sunset Beach Town Park

Address: 206 Sunset Blvd, Sunset Beach, NC

Join us for a wonderful holiday concert featuring holiday music by the Brunswick Big Band. Paw-Ability has had an amazing year and they want to thank their friends for their support. Photos with Santa, hot chocolate, cookies, beer & wine. Relax, sing along and enjoy some music.

## HOLIDAY AT THE MUSEUM

Date: Friday, Nov. 24, 2023

Time: 10:00 AM- 4:00 PM

Location: Museum of Coastal Carolina

Address: 21 E 2nd St, Ocean Isle Beach, NC 28469

"HoliDAY" at the Museum of Coastal Carolina is a beach-themed holiday celebration for the whole family. Visitors can complete beach-themed crafts and play with snow at the beach through fun science activities. Shiver me timbers! The Museum has been warned that White Beard the Pirate Clause will dock his ship, invade HoliDAY, and share pirate booty with all children. HoliDAY visitors can also stroll through the Museum's enchanting 4th Annual Festival of Trees at a leisurely pace, admire trees artfully decorated by area businesses and nonprofits, and engage in friendly competition by voting for and bidding on your favorite trees.

## LETTERS TO SANTA

Date: Friday, Nov. 24, 2023

Time: 6:00 PM - 8:00 PM

Location: OIB Town Center Park

Address: 3 E 2nd St, Ocean Isle Beach, NC

This special Holiday event features a special "kick-off" from the West Brunswick High School Dance Team, a visit with Santa, tree lighting, letter writing station, a mailbox to the North Pole, craft station, hot chocolate and cookies and magical light displays!

## OCEAN ISLE BEACH FLOTILLA

Date: Saturday, Nov. 25, 2023

Time: 5:30 PM

Location: Intracoastal Waterway and Ocean Isle Beach Commercial Canal

The Annual Ocean Isle Beach Flotilla will take place on Saturday, November 25, 2023. The boat parade lines up at 5:00 p.m. in front of Inlet View Bar & Grill. Once dusk has fallen and all the lights are on and ready to go, they will begin their way down the Intracoastal Waterway, ending at Sharky's restaurant around 7:00 p.m. for awards and an after party. You will find excellent viewing spots between both restaurants, including

the ending point in the commercial canal in front of Sharky's Restaurant.

## CALABASH CHRISTMAS TREE LIGHTING

Date: Friday, Dec. 1, 2023

Time: 6:00 PM

Location: Downtown Calabash

Address: 9973 Beach Drive SW, Calabash, NC 28467

The 2023 holiday season lights up with the annual Spirit of Calabash Parade and Christmas Tree Lighting. Located in downtown Calabash at Callahan's of Calabash, the Spirit of Calabash Parade strolls down Beach Drive to River Road and is full of colorful and entertaining groups. Also enjoy community caroling, hot cocoa, children's letter writing and reindeer food stations! Santa will be transported to the event by the Calabash Fire Department. The main tree lighting event begins immediately after the parade on the main stage.

## SHALLOTTE CHRISTMAS PARADE

Date: Saturday, Dec. 2, 2023

Time: 10:00 AM

Address: Main Street, Shallotte, NC 28470

Shallotte's Christmas Parade is on Saturday, December 2nd at 10:00 a.m. The parade starts from the intersection of Main Street and Highway 130 then ends at the intersection of Main Street and Smith Avenue. The roads close at 8:00 a.m.

## CHRISTMAS BY THE SEA PARADE

Date: Saturday, Dec. 2, 2023

Time: 2:00 PM

Address: E Dolphin Drive and Middleton

Avenue, Oak Island, NC 28465

The 2023 Christmas by the Sea Parade in Oak Island will be held on Saturday, December 2nd. The parade showcases the businesses and organizations in the community. The hometown feel of the parade makes it a favorite event of locals, second homeowners and visitors. The parade steps off at 2:00 p.m. beginning on East Oak Island Drive in front of Town Hall and making it's way eastward, ending at McGlamery Street. As always, Santa and Mrs. Claus will be the final float at the end of the parade waving to children and the young at heart as they drive by.

## TACO TUESDAY @ MAKAI

Date: Tuesday, Dec. 5, 2023

Time: 5:00-7:00 PM

Address: 5850 Ocean Hwy W #1

Ocean Isle Beach, NC 28469

Join us every Tuesday evening at 5pm to satisfy that Taco craving! Food truck is Bad EatZ!



Looking to call the beach home,  
give us a call at 800.975.6024 or  
visit [www.silvercoastnc.com](http://www.silvercoastnc.com)



## 2023 & 2024 Tide Chart - Sunset Beach Pier

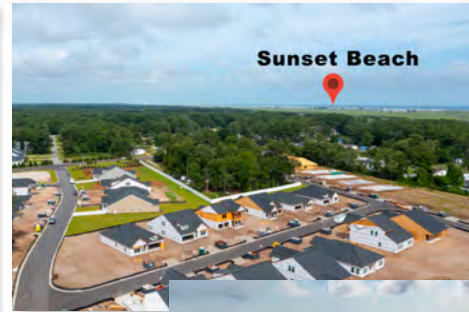


October				November				December			
Time	Height	Time	Height	Time	Height	Time	Height	Time	Height	Time	Height
1 09:13 AM -0.9	-0.9	16 02:59 AM 0.1	0.1	1 04:12 AM 0.2	0.2	16 02:44 AM -0.1	-0.1	1 03:29 AM 0.1	0.1	16 03:24 AM 0.4	-0.2
09:20 AM -0.8	-0.8	16 03:27 AM 0.2	0.2	1 05:01 AM 0.5	0.5	16 03:41 AM 0.6	0.6	1 03:53 AM 0.3	0.3	16 04:07 AM 0.7	0.7
09:29 PM -0.6	-0.6	16 03:59 AM 0.3	0.3	1 05:31 AM 0.8	0.8	16 04:29 PM 0.8	0.8	1 04:20 PM 0.6	0.6	16 04:38 PM 0.8	0.8
09:47 PM -0.3	-0.3	16 04:31 AM 0.4	0.4	1 06:01 AM 1.1	1.1	16 05:01 PM 1.1	1.1	1 04:50 PM 0.9	0.9	16 05:08 PM 1.1	1.1
2 09:57 AM -0.7	-0.7	16 05:03 AM 0.5	0.5	1 06:31 AM 1.4	1.4	16 05:31 PM 1.4	1.4	2 04:13 AM 0.4	0.4	16 05:38 PM 1.2	1.2
10:09 AM -0.6	-0.6	16 05:35 AM 0.6	0.6	1 07:01 AM 1.7	1.7	16 06:01 PM 1.7	1.7	2 04:43 AM 0.7	0.7	16 06:08 PM 1.3	1.3
10:49 PM -0.2	-0.2	16 06:07 AM 0.7	0.7	1 07:31 AM 2.0	2.0	16 06:31 PM 2.0	2.0	2 05:13 AM 1.0	1.0	16 06:38 PM 1.4	1.4
10:39 PM -0.8	-0.8	16 06:39 AM 0.8	0.8	1 08:01 AM 2.3	2.3	16 07:01 PM 2.3	2.3	2 05:43 AM 1.3	1.3	16 07:08 PM 1.5	1.5
3 10:49 AM -0.3	-0.3	16 07:11 AM 0.9	0.9	1 08:31 AM 2.6	2.6	16 07:31 PM 2.6	2.6	3 04:58 AM 0.6	0.6	16 07:38 PM 1.6	1.6
11:03 AM -0.6	-0.6	16 07:43 AM 1.0	1.0	1 09:01 AM 2.9	2.9	16 08:01 PM 2.9	2.9	3 05:28 AM 0.9	0.9	16 08:08 PM 1.7	1.7
11:36 PM 0.2	0.2	16 08:15 AM 1.1	1.1	1 09:31 AM 3.2	3.2	16 08:31 PM 3.2	3.2	3 06:08 AM 1.2	1.2	16 08:38 PM 1.8	1.8
11:36 AM 0.4	0.4	16 08:47 AM 1.2	1.2	1 10:01 AM 3.5	3.5	16 09:01 PM 3.5	3.5	3 06:48 AM 1.5	1.5	16 09:08 PM 1.9	1.9
4 05:27 AM 0.0	0.0	16 09:19 AM 1.3	1.3	1 10:31 AM 3.8	3.8	16 09:31 PM 3.8	3.8	4 01:00 AM 0.8	0.8	16 09:38 PM 2.0	2.0
06:17 AM 0.4	0.4	16 09:51 AM 1.4	1.4	1 11:01 AM 4.1	4.1	16 10:01 PM 4.1	4.1	4 01:30 AM 1.1	1.1	16 10:08 PM 2.1	2.1
06:23 PM 0.6	0.6	16 10:23 AM 1.5	1.5	1 11:31 AM 4.4	4.4	16 10:31 PM 4.4	4.4	4 02:00 AM 1.4	1.4	16 10:38 PM 2.2	2.2
5 12:35 AM 0.1	0.1	16 10:55 AM 1.6	1.6	1 12:01 PM 4.7	4.7	16 11:01 PM 4.7	4.7	5 01:05 AM 1.7	1.7	16 11:08 PM 2.3	2.3
06:17 AM 0.4	0.4	16 11:27 AM 1.7	1.7	1 12:31 PM 5.0	5.0	16 11:31 PM 5.0	5.0	5 01:35 AM 2.0	2.0	16 11:38 PM 2.4	2.4
07:23 PM 1.0	1.0	16 11:59 AM 1.8	1.8	1 01:01 PM 5.3	5.3	16 12:01 PM 5.3	5.3	5 02:05 AM 2.3	2.3	16 12:08 PM 2.5	2.5
6 01:32 AM 0.9	0.9	16 12:31 PM 1.9	1.9	1 01:31 PM 5.6	5.6	16 12:31 PM 5.6	5.6	6 01:45 AM 2.6	2.6	16 12:38 PM 2.6	2.6
07:13 AM 0.7	0.7	16 13:03 PM 2.0	2.0	1 02:01 PM 5.9	5.9	16 13:03 PM 5.9	5.9	6 02:15 AM 2.9	2.9	16 13:08 PM 2.7	2.7
07:58 PM 1.4	1.4	16 13:35 PM 2.1	2.1	1 02:31 PM 6.2	6.2	16 13:35 PM 6.2	6.2	6 02:45 AM 3.2	3.2	16 13:38 PM 2.8	2.8
9 08:34 PM 1.2	1.2	16 14:07 PM 2.2	2.2	1 03:01 PM 6.5	6.5	16 14:07 PM 6.5	6.5	6 03:15 AM 3.5	3.5	16 14:08 PM 2.9	2.9
7 02:27 AM 3.8	3.8	16 14:39 PM 2.3	2.3	1 03:31 PM 6.8	6.8	16 14:39 PM 6.8	6.8	7 02:38 AM 4.1	4.1	16 14:38 PM 3.0	3.0
08:22 AM 0.9	0.9	16 15:11 PM 2.4	2.4	1 04:01 PM 7.1	7.1	16 15:11 PM 7.1	7.1	7 03:08 AM 4.4	4.4	16 15:08 PM 3.1	3.1
08:22 PM 1.2	1.2	16 15:43 PM 2.5	2.5	1 04:31 PM 7.4	7.4	16 15:43 PM 7.4	7.4	7 03:38 AM 4.7	4.7	16 15:38 PM 3.2	3.2
8 09:22 AM 3.9	3.9	16 16:15 PM 2.6	2.6	1 05:01 PM 7.7	7.7	16 16:15 PM 7.7	7.7	8 03:58 AM 5.0	5.0	16 16:08 PM 3.3	3.3
09:32 AM 4.1	4.1	16 16:47 PM 2.7	2.7	1 05:31 PM 8.0	8.0	16 16:47 PM 8.0	8.0	8 04:28 AM 5.3	5.3	16 16:38 PM 3.4	3.4
10:33 PM 1.1	1.1	16 17:19 PM 2.8	2.8	1 06:01 PM 8.3	8.3	16 17:19 PM 8.3	8.3	8 04:58 AM 5.6	5.6	16 17:08 PM 3.5	3.5
9 04:16 AM 4.0	4.0	16 17:51 PM 2.9	2.9	1 06:31 PM 8.6	8.6	16 17:51 PM 8.6	8.6	9 05:18 AM 5.9	5.9	16 17:38 PM 3.6	3.6
10:29 PM 0.8	0.8	16 18:23 PM 3.0	3.0	1 07:01 PM 8.9	8.9	16 18:23 PM 8.9	8.9	9 05:48 AM 6.2	6.2	16 18:08 PM 3.7	3.7
10:49 PM 0.9	0.9	16 18:55 PM 3.1	3.1	1 07:31 PM 9.2	9.2	16 18:55 PM 9.2	9.2	9 06:18 AM 6.5	6.5	16 18:38 PM 3.8	3.8
11 05:08 AM 4.2	4.2	16 19:27 PM 3.2	3.2	1 08:01 PM 9.5	9.5	16 19:27 PM 9.5	9.5	10 05:48 AM 6.8	6.8	16 19:08 PM 3.9	3.9
05:16 AM 0.8	0.8	16 19:59 PM 3.3	3.3	1 08:31 PM 9.8	9.8	16 19:59 PM 9.8	9.8	10 06:18 AM 7.1	7.1	16 19:38 PM 4.0	4.0
05:26 PM 4.6	4.6	16 20:31 PM 3.4	3.4	1 09:01 PM 10.1	10.1	16 20:31 PM 10.1	10.1	10 06:48 AM 7.4	7.4	16 20:08 PM 4.1	4.1
11:53 PM 0.6	0.6	16 21:03 PM 3.5	3.5	1 09:31 PM 10.4	10.4	16 21:03 PM 10.4	10.4	10 07:18 AM 7.7	7.7	16 20:38 PM 4.2	4.2
11 05:08 AM 4.5	4.5	16 21:35 PM 3.6	3.6	1 10:01 PM 10.7	10.7	16 21:35 PM 10.7	10.7	11 05:48 AM 8.0	8.0	16 21:08 PM 4.3	4.3
05:01 PM 0.5	0.5	16 22:07 PM 3.7	3.7	1 10:31 PM 11.0	11.0	16 22:07 PM 11.0	11.0	11 06:18 AM 8.3	8.3	16 21:38 PM 4.4	4.4
05:09 PM 4.7	4.7	16 22:39 PM 3.8	3.8	1 11:01 PM 11.3	11.3	16 22:39 PM 11.3	11.3	11 06:48 AM 8.6	8.6	16 22:08 PM 4.5	4.5
12 12:30 AM 0.4	0.4	16 23:11 PM 3.9	3.9	1 11:31 PM 11.6	11.6	16 23:11 PM 11.6	11.6	12 12:30 AM 0.7	0.7	16 22:38 PM 4.6	4.6
06:39 AM 4.8	4.8	16 23:43 PM 4.0	4.0	1 12:01 PM 11.9	11.9	16 23:43 PM 11.9	11.9	12 01:00 AM 1.0	1.0	16 23:08 PM 4.7	4.7
06:48 PM 0.4	0.4	16 24:15 PM 4.1	4.1	1 12:31 PM 12.2	12.2	16 24:15 PM 12.2	12.2	12 01:30 AM 1.3	1.3	16 23:38 PM 4.8	4.8
13 01:06 AM 0.2	0.2	16 24:47 PM 4.2	4.2	1 01:01 PM 12.5	12.5	16 24:47 PM 12.5	12.5	12 02:00 AM 1.6	1.6	16 24:08 PM 4.9	4.9
07:17 AM 5.0	5.0	16 25:19 PM 4.3	4.3	1 01:31 PM 12.8	12.8	16 25:19 PM 12.8	12.8	12 02:30 AM 1.9	1.9	16 24:38 PM 5.0	5.0
07:24 PM 0.2	0.2	16 25:51 PM 4.4	4.4	1 02:01 PM 13.1	13.1	16 25:51 PM 13.1	13.1	12 03:00 AM 2.2	2.2	16 25:08 PM 5.1	5.1
14 01:42 AM 0.1	0.1	16 26:23 PM 4.5	4.5	1 02:31 PM 13.4	13.4	16 26:23 PM 13.4	13.4	12 03:30 AM 2.5	2.5	16 25:38 PM 5.2	5.2
07:51 AM 5.2	5.2	16 26:55 PM 4.6	4.6	1 03:01 PM 13.7	13.7	16 26:55 PM 13.7	13.7	12 04:00 AM 2.8	2.8	16 26:08 PM 5.3	5.3
07:57 PM 4.7	4.7	16 27:27 PM 4.7	4.7	1 03:31 PM 14.0	14.0	16 27:27 PM 14.0	14.0	12 04:30 AM 3.1	3.1	16 26:38 PM 5.4	5.4
15 05:16 AM 0.1	0.1	16 27:59 PM 4.8	4.8	1 04:01 PM 14.3	14.3	16 27:59 PM 14.3	14.3	12 05:00 AM 3.4	3.4	16 27:08 PM 5.5	5.5
05:24 PM 5.3	5.3	16 28:31 PM 4.9	4.9	1 04:31 PM 14.6	14.6	16 28:31 PM 14.6	14.6	12 05:30 AM 3.7	3.7	16 27:38 PM 5.6	5.6
05:29 PM 4.6	4.6	16 29:03 PM 5.0	5.0	1 05:01 PM 14.9	14.9	16 29:03 PM 14.9	14.9	12 06:00 AM 4.0	4.0	16 28:08 PM 5.7	5.7
31 03:28 AM -0.5	-0.5	16 29:35 PM 5.1	5.1	1 05:31 PM 15.2	15.2	16 29:35 PM 15.2	15.2	12 06:30 AM 4.3	4.3	16 28:38 PM 5.8	5.8
04:18 PM 0.0	0.0	16 30:07 PM 5.2	5.2	1 06:01 PM 15.5	15.5	16 30:07 PM 15.5	15.5	12 07:00 AM 4.6	4.6	16 29:08 PM 5.9	5.9
10:10 PM 4.5	4.5	16 30:39 PM 5.3	5.3	1 06:31 PM 15.8	15.8	16 30:39 PM 15.8	15.8	12 07:30 AM 4.9	4.9	16 29:38 PM 6.0	6.0

February												March															
Time				Height				Time				Height				Time				Height							
h	m	ft	cm	h	m	ft	cm	h	m	ft	cm	h	m	ft	cm	h	m	ft	cm	h	m	ft	cm				
1	04:24	0.5	15	16	04:59	-0.2	-6	1	05:12	0.9	27	16	12:58	5.4	168	1	04:42	1.1	34	16	01:02	5.6	171				
10	46	4.4	134	16	05:29	-0.5	-15	1	11:24	4.1	124	16	01:32	5.7	171	10	42	4.2	124	16	01:32	5.7	171				
05	01	PM	0.6	16	05:59	-0.8	-21	1	11:54	3.9	117	16	02:02	5.8	174	05	29	PM	0.9	16	02:02	5.8	174				
05	47	PM	0.3	16	06:29	-1.1	-28	1	12:24	3.7	110	16	02:32	5.9	174	05	47	PM	0.6	16	02:32	5.9	174				
2	05:06	0.8	24	16	06:59	-1.4	-35	1	12:54	3.5	103	2	05:30	1.2	35	2	05:30	1.2	37	17	02:04	5.3	162				
11	30	AM	4.2	16	07:29	-1.7	-42	1	01:24	3.3	96	11	30	AM	4.0	125	11	30	AM	4.0	125	16	03:46	1.4	43		
06	24	PM	0.7	16	07:59	-2.0	-49	1	01:54	3.1	89	06	24	PM	0.4	131	06	24	PM	0.4	131	16	03:46	1.4	43		
3	12:17	AM	0.0	16	08:29	-2.3	-56	3	01:01	4.5	137	3	12:25	AM	5.1	150	3	12:25	AM	5.1	150	16	03:05	5.2	148		
06	53	AM	0.9	16	08:59	-2.6	-63	3	01:31	4.3	130	06	53	AM	0.6	156	3	12:55	AM	5.2	151	16	03:35	5.4	157		
11	30	AM	4.2	16	09:29	-2.9	-70	3	02:01	4.1	123	11	30	AM	4.2	128	11	30	AM	4.2	128	16	03:05	5.2	148		
06	24	PM	0.7	16	09:59	-3.2	-77	3	02:31	3.9	116	06	24	PM	0.7	136	06	24	PM	0.7	136	16	03:35	5.4	157		
4	01:02	AM	0.1	16	10:29	-3.5	-84	4	01:56	4.7	143	4	01:25	AM	5.1	155	4	01:25	AM	5.1	155	16	03:05	5.2	148		
06	50	AM	1.1	16	10:59	-3.8	-91	4	02:26	4.5	136	4	01:55	AM	5.2	157	4	01:55	AM	5.2	157	16	03:35	5.4	157		
07	16	PM	0.7	21	06:31	0.0	0	4	02:56	4.3	129	4	02:27	AM	5.3	160	4	02:27	AM	5.3	160	16	03:05	5.2	148		
5	01:48	AM	4.3	23	06:59	-4.1	-115	5	02:56	5.0	152	5	02:57	AM	5.3	162	5	02:57	AM	5.3	162	20	04:31	AM	5.1	155	
07	58	AM	1.1	23	07:29	-4.4	-122	5	03:26	4.8	145	5	03:28	AM	5.4	163	5	03:28	AM	5.4	163	20	04:31	AM	5.1	155	
01	46	PM	3.8	116	07:59	-4.7	-129	5	03:56	4.6	138	5	03:58	AM	5.5	164	5	03:58	AM	5.5	164	20	04:31	AM	5.1	155	
08	15	PM	0.7	21	08:31	0.0	0	6	03:27	4.7	141	6	03:30	AM	5.6	167	6	03:30	AM	5.6	167	20	04:31	AM	5.1	155	
6	02:39	AM	4.5	137	21	08:59	-4.4	-126	6	03:57	4.5	138	6	03:30	AM	5.6	167	6	03:30	AM	5.6	167	20	04:31	AM	5.1	155
09	56	AM	0.9	137	21	09:29	-4.7	-133	6	04:27	4.3	131	6	03:30	AM	5.6	167	6	03:30	AM	5.6	167	20	04:31	AM	5.1	155
10	42	PM	4.7	137	21	09:59	-5.0	-140	6	04:57	4.1	124	6	03:30	AM	5.6	167	6	03:30	AM	5.6	167	20	04:31	AM	5.1	155
7	03:32	AM	4.8	146	22	04:48	5.2	158	7	04:57	4.2	127	7	03:30	AM	5.6	167	7	03:30	AM	5.6	167	20	04:31	AM	5.1	155
10	04	PM	3.8	116	22	05:18	5.5	161	7	05:27	4.0	120	7	03:30	AM	5.6	167	7	03:30	AM	5.6	167	20	04:31	AM	5.1	155
10	04	PM	3.8	116	22	05:48	5.8	164	7	05:57	3.8	113	7	03:30	AM	5.6	167	7	03:30	AM	5.6	167	20	04:31	AM	5.1	155
8	04:28	AM	5.1	155	23	06:08	-5.3	-162	8	06:27	4.1	118	8	03:32	AM	5.7	168	8	03:32	AM	5.7	168	20	04:31	AM	5.1	155
04	35	PM	3.9	110	23	06:38	-5.6	-169	8	06:57	3.9	111	8	03:32	AM	5.7	168	8	03:32	AM	5.7	168	20	04:31	AM	5.1	155
04	35	PM	3.9	110	23	07:08	-5.9	-176	8	07:27	3.7	104	8	03:32	AM	5.7	168	8	03:32	AM	5.7	168	20	04:31	AM	5.1	155
9	05:22	AM	5.5	168	24	06:22	-5.4	-160	9	07:57	3.6	107	9	03:32	AM	5.7	168	9	03:32	AM	5.7	168	20	04:31	AM	5.1	155
11	50	AM	0.1	3	24	06:52	-5.7	-167	9	08:27	3.4	100	9	03:32	AM	5.7	168	9	03:32	AM	5.7	168	20	04:31	AM	5.1	155
11	46	PM	-0.4	-12	24	07:22	-6.0	-174	9	08:57	3.2	93	9	03:32	AM	5.7	168	9	03:32	AM	5.7	168	20	04:31	AM	5.1	155
10	13	AM	5.9	180	25	06:42	-6.2	-181	10	09:27	3.0	86	10	03:32	AM	5.7	168	10	03:32	AM	5.7	168	20	04:31	AM	5.1	155
07	01	PM	6.2	189	25	07:12	-6.5	-188	10	09:57	2.8	79	10	03:32	AM	5.7	168	10	03:32	AM	5.7	168	20	04:31	AM	5.1	155
11	29	PM	-0.4	-12	25	07:42	-6.8	-195	10	10:27	2.6	72	10	03:32	AM	5.7	168	10	03:32	AM	5.7	168	20	04:31	AM	5.1	155
11	29	PM	-0.4	-12	25	08:12	-7.1	-202	10	10:57	2.4	65	10	03:32	AM	5.7	168	10	03:32	AM	5.7	168	20	04:31	AM	5.1	155
11	29	PM	-0.4	-12	25	08:42	-7.4	-209	10	11:27	2.2	58	10	03:32	AM	5.7	168	10	03:32	AM	5.7	168	20	04:31	AM	5.1	155
11	29	PM	-0.4	-12	25	09:12	-7.7	-216	10	11:57	2.0	51	10	03:32	AM	5.7	168	10	03:32	AM	5.7	168	20	04:31	AM	5.1	155
11	29	PM	-0.4	-12	25	09:42	-8.0	-223	10	12:27	1.8	44	10	03:32	AM	5.7	168	10	03:32	AM	5.7	168	20	04:31	AM	5.1	155
11	29	PM	-0.4	-12	25	10:12	-8.3	-230	10	12:57	1.6	37	10	03:32	AM	5.7	168	10	03:32	AM	5.7	168	20	04:31	AM	5.1	155
11	29	PM	-0.4	-12	25	10:42	-8.6	-237	10	13:27	1.4	30	10	03:32	AM	5.7	168	10	03:32	AM	5.7	168	20	04:31	AM	5.1	155
11	29	PM	-0.4	-12	25	11:12	-8.9	-244	10	13:57	1.2	23	10	03:32	AM	5.7	168	10	03:32	AM	5.7	168	20	04:31	AM	5.1	155
11	29	PM	-0.4	-12	25	11:42	-9.2	-251	10	14:27	1.0	16	10	03:32	AM	5.7	168	10	03:32	AM	5.7	168	20	04:31	AM	5.1	155
11	29	PM	-0.4	-12	25	12:12	-9.5	-258	10	14:57	0.8	9	10	03:32	AM	5.7	168	10	03:32	AM	5.7	168	20	04:31	AM	5.1	155
11	29	PM	-0.4	-12	25	12:42	-9.8	-265	10	15:27	0.6	2	10	03:32	AM	5.7	168	10	03:32	AM	5.7	168	20	04:31	AM	5.1	155
11	29	PM	-0.4	-12	25	13:12	-10.1	-272	10	15:57	0.4	-5	10	03:32	AM	5.7	168	10	03:32	AM	5.7	168	20	04:31	AM	5.1	155
11	29	PM	-0.4	-12	25	13:42	-10.4	-279	10	16:27	0.2	-12	10	03:32	AM	5.7	168	10	03:32	AM	5.7	168	20	04:31	AM	5.1	155
11	29	PM	-0.4	-12	25	14:12	-10.7	-286	10	16:57	0.0	-19	10	03:32	AM	5.7	168	10	03:32	AM	5.7	168	20	04:31	AM	5.1	155
11	29	PM	-0.4	-12	25	14:42	-11.0	-293	10	17:27	-0.2	-26	10	03:32	AM	5.7	168	10	03:32	AM	5.7	168	20	04:31	AM	5.1	155
11	29	PM	-0.4	-12	25	15:12	-11.3	-300	10	17:57	-0.4	-33	10	03:32	AM	5.7	168	10	03:32	AM	5.7	168	20	04:31	AM	5.1	155
11	29	PM	-0.4	-12	25	15:42	-11.6	-307	10	18:27	-0.6	-40	10	03:32	AM	5.7	168	10	03:32	AM	5.7	168	20	04:31	AM	5.1	155
11	29	PM	-0.4	-12	25	16:12	-11.9	-314	10	18:57	-0.8	-47	10	03:32	AM	5.7	168	10	03:32	AM	5.7	168	20	04:31	AM	5.1	155
11	29	PM	-0.4	-12	25	16:42	-12.2	-321	10	19:27	-1.0	-54	10	03:32	AM	5.7	168	10	03:32	AM	5.7	168	20	04:31	AM	5.1	155
11	29	PM	-0.4	-12	25	17:12	-12.5	-328	10	19:57	-1.2	-61	10	03:32	AM	5.7	168	10	03:32	AM	5.7	168	20	04:31	AM	5.1	155
11	29	PM	-0.4	-12	25	17:42	-12.8	-335	10	20:27	-1.4	-68	10	03:32	AM	5.7	168	10	03:32	AM	5.7	168	20	04:31	AM	5.1	155
11	29	PM	-0.4	-12	25	18:12	-13.1	-342	10	20:57	-1.6	-75	10	03:32	AM	5.7	168	10	03:32	AM	5.7	168	20	04:31	AM	5.1	155
11	29	PM	-0.4	-12	25	18:42	-13.4	-349	10	21:27	-1.8	-82	10	03:32	AM	5.7	168	10	03:32	AM	5.7	168	20	04:31	AM	5.1	155
11	29	PM	-0.4	-12	25	19:12	-13.7	-356	10	21:57	-2.0	-89	10	03:32	AM	5.7	168	10	03:32	AM	5.7	168	20	04:31	AM	5.1	155
11	29	PM	-0.4	-12	25	19:42	-14.0	-363	10	22:27	-2.2	-96	10	03:32													

# NEW COMMUNITY SPOTLIGHT

## BEACH WALK - CALABASH



### COMMUNITY PROFILE

<b>Total Build-Out:</b>	253	<b>Local Beach:</b>	Sunset Beach
<b>Completed Homes:</b>	35-40	<b>Time to Beach:</b>	5 Minutes
<b>Floorplans Available:</b>	5	<b>Real Estate Offered:</b>	Homes
<b>Starting Home Prices:</b>	Mid \$300s	<b>HOA Includes Lawn Care:</b>	No
<b>2023 Annual HOA Fee:</b>	\$980	<b>Local Hospital:</b>	McLeod Hospital
<b>County Taxes (per \$100k):</b>	\$342	<b>Hospital Distance</b>	7 Miles
<b>City Taxes (per \$100k):</b>	\$58	<b>Septic/Sewer:</b>	Sewer
<b>Gated Neighborhood:</b>	No	<b>Water Source:</b>	Public
<b>Golf Cart Friendly:</b>	Yes	<b>Nearest Airport:</b>	45 mins to Myrtle Beach



Welcome to Beach Walk, a vibrant and coastal community where the sun-kissed shores of Sunset Beach meet the captivating riverfront dining scene of Calabash. Nestled in the heart of this picturesque coastal haven, Beach Walk offers an idyllic lifestyle that marries the best of beachside living and everyday conveniences.



Positioned just a stone's throw away from the pristine sands of Sunset Beach, Beach Walk is a beach lover's paradise. Imagine starting your day with a leisurely stroll along the shore, breathing in the salty sea breeze and basking in the warm Carolina sun. With your toes in the sand within minutes, you'll savor every moment of this coastal oasis. Plus, the community's strategic location provides convenient access to the vibrant attractions of Myrtle Beach, SC, and the historic charm of Wilmington, NC, both just a short drive away.



For food enthusiasts, Beach Walk boasts unbeatable access to a plethora of riverfront dining options in the charming town of Calabash. Renowned as the "Seafood Capital of the World," Calabash invites you to savor delectable seafood dishes

while enjoying scenic views of the Intracoastal Waterway. From succulent shrimp and flaky fish to mouthwatering crab cakes, you'll be spoiled for choice by the culinary treasures that await.

The Beach Walk community offers a diverse range of housing options, from cozy beach cottages to spacious modern homes, each designed to capture the essence of coastal living. Immerse yourself in the friendly, tight-knit community where neighbors become lifelong friends. Enjoy amenities like private beach access, a clubhouse, and scenic walking trails. Plus, the nearby Grand Strand Airport ensures hassle-free air transportation options for your convenience.

The planned amenities for Beach Walk include a picnic area and outdoor pool.

**TO LEARN MORE CALL  
(800) 975-6024 OR VISIT  
[BEACHWALKREALESTATE.COM](http://BEACHWALKREALESTATE.COM)**