

BEACH REAL ESTATE GUIDE

Sunset Beach ■ Ocean Isle Beach ■ Calabash ■ Carolina Shores

TOP COMMUNITY INFORMATION • FEATURED REAL ESTATE • TIDE CHART

UPCOMING EVENTS • ACTIVITIES • MARKET INFO



NEW LISTING

1282 LANDOVER DRIVE | RETREAT AT OIB
OFFERED AT: \$649,000



NEW LISTING

1008 GREAT EGRET CIRCLE SW 43D | SUNSET BEACH
OFFERED AT: \$249,000

SILVER COAST PROPERTIES TEAM



Bill Anderson



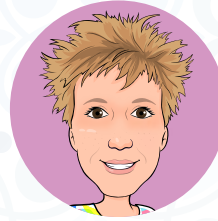
Joy Anderson



Darren Bouley



Kimberly Lank



Colleen Teifer



Makayla Fenske

Silver Coast Properties is a full-service real estate brokerage providing sales and marketing support to southeastern North Carolina residents, as well as comprehensive buyer support including property evaluation, negotiations, and acquisition. Our commitment to clients has resulted in a sterling reputation with thousands of satisfied real estate buyers and sellers.

SELLER SERVICES

Silver Coast Properties is more than a real estate company, we are your technology and marketing partner. We provide our real estate listing clients with access to the latest in cutting-edge technology to make their property stand out from the competition.

More than 98% of would-be buyers begin by investigating communities and real estate online. We capitalize on this trend for our clients by employing the latest 3-D virtual tour technology, professional photography, aerial photography and custom website development for each home.

Many large national brokerages flout their size as the reason you should list your property with them. The reality is the Internet has given the advantage to small dynamic companies. In fact, the data indicates that less than 10% of the time, properties are sold by the same listing company.

Our boutique-style brokerage provides the individualized service that our clients expect from a business partner. Silver Coast Properties possesses the knowledge and market acumen to communicate the benefits of your home to would-be buyers.

Many firms will enter your home in the MLS and wait for a buyer. We are actively engaged in the process of marketing your home online and through a network of marketing channels. Boasting more than 20 top ranking websites, we are uniquely poised to market and sell your property.

Call us at (800) 975-6024 for a confidential, no-pressure discussion about our services and market conditions.

BUYER SERVICES

Our area offers a diverse collection of real estate options appealing to individuals and families interested in a full-time residence, second home or beach getaway. The real estate products support a variety of needs and budgets. We are here to help you understand the myriad of options and advise you which is the best choice based on your needs.

New Home Construction

Sunset Beach is a desirable seaside location and continues to offer new home construction on both privately owned and developer owned lots. We are here to support you throughout the new home construction process. Building a home can be a very rewarding experience, allowing the homeowner the ability to tailor the home to their tastes and lifestyle. Our team is here to offer as much or as little assistance as you need based on your knowledge, experience comfort level with building a home. The Silver Coast Properties team provides the same assistance as if the owner were purchasing a pre-owned home. And, like a pre-owned home, our agency is compensated by the seller/

builder to help both parties achieve their desired goals.

Custom Home Building Lots

Silver Coast Properties provides essential services to help our clients identify, evaluate, and purchase a building lot. Our experienced team will help you identify the best fit for your needs and budget, as well as avoid those areas that are more susceptible to flooding, have disadvantaged locations or may require higher lot preparation and construction costs.

We support our clients with reputable builder recommendations and hold your hand through the building process. With more than a decade of experience helping with new construction our team is here to be a pivotal ally in turning your custom dream home into a reality.

Our professional support includes, but is not limited to:

- Identifying the perfect lot
- Sourcing a qualified home designer/ar-

chitect

- Evaluating and selecting a local builder
- Providing recommendations for home features based on our years of experience
- Coordinating a transition rental while you build—depending on your needs

Pre-owned Homes, Townhouses and Condominiums

Pre-owned homes are a convenient option for our clients that don't have the time to build or don't wish to go through the building process. The availability of pre-owned homes varies through the year with the spring and fall historically being the more active real estate markets. However, the expectation of a busy season has changed in the last few years because of a steady stream of new residents investigating and falling in love with our desirable seaside location.

Call us at (800) 975-6024 for a confidential, no-pressure discussion about our services and market conditions.

TOP LOCAL COMMUNITIES

SUNSET RIDGE

Ocean Isle Beach, North Carolina



COMMUNITY AMENITIES

- Walking trail
- Sidewalks
- Outdoor pool
- Fitness center
- Owners' clubhouse
- Owners' lounge
- Clubs & organizations
- Activity room

COMMUNITY PROFILE

Total Build-Out: 400	Local Beach: Sunset Beach
Completed Homes: 400	Time to Beach: 5 Minutes
Total Acreage: 300	Real Estate Offered: Homes, Townhouse
Website: www.sunsetridgenchomes.com	Starting Home Prices: High \$300s
2024 Annual HOA Fee: \$2,040	Starting Lot Prices: N/A
County Taxes (per \$100k): \$345	Golf Carts Permitted Yes (public roads)
City Taxes (per \$100k): N/A	Starting Price Townhouse: High \$200s
Local Hospital: Novant/Brunswick Hospital	Hospital Distance: 12 Miles
Gated Neighborhood: No	HOA Includes Landscaping: Yes

SANDPIPER BAY

Sunset Beach, North Carolina



COMMUNITY AMENITIES

Single Family Homeowner Amenities:

- Private residents center
- 2 tennis/pickleball courts
- Outdoor pool
- Residents' lounge
- Clubs & organizations
- Outdoor spa
- Fitness room

Condominium Owner Amenities:

- 2 outdoor pools
- Bocce courts
- Tennis court
- Screened Lanai
- Picnic area

All Residents & Public:

27-holes of golf
Golf clubhouse with dining

COMMUNITY PROFILE

Total Build-Out: 300 Homes 150 Condos	Local Beach: Sunset Beach
Completed Homes: 100% Complete	Time to Beach: 10 Minutes
Total Acreage: 250	Real Estate Offered: Homes, Condominiums
Website: www.SandPiperBayRealEstate.com	Starting Home Prices: High \$300s
2024 Annual HOA Fee: \$900 (Homes)	Starting Lot Prices: N/A
County Taxes (per \$100k): \$345	Starting Price Condo: Low \$200s
City Taxes (per \$100k): \$160	Water/Sewer: Public/Public
Local Hospital: McLeod Seacoast Hospital	Hospital Distance: 15 minutes
Gated Neighborhood: No	HOA Includes Landscaping: No

TOP LOCAL COMMUNITIES

OCEAN RIDGE PLANTATION

Ocean Isle Beach, North Carolina



COMMUNITY AMENITIES

- 72 holes of golf
- Oceanfront beach club
- New Community Center Planned
- Indoor pool
- Fitness center
- Outdoor pool with lap lanes
- Owners' clubhouse
- 65 Clubs & organizations
- Walking & biking trails
- Poolside grilling pavilion
- Nature park & pavilion
- Owners' lounge
- Horseshoe pits
- Bocce ball court
- Tennis/pickle ball courts
- RV/Boat storage
- Activity rooms
- Fishing lake
- Steam room & dry Sauna
- Outdoor whirlpool

COMMUNITY PROFILE

Total Home Build-Out:	2,800	Local Beach:	Sunset Beach
Completed Homes:	1,000-1,050	Time to Beach:	5 Minutes
Appox. Total Acreage:	2,800	Real Estate Offered:	Homes, Lots
Website:	www.OceanRidgePlantationHomes.com	Starting Home Prices:	Mid \$500s
2024 Annual HOA Fee:	\$2,465	Starting Lot Prices:	\$20s
County Taxes (per \$100k):	\$345	Utilities:	Public
City Taxes (per \$100k):	N/A	Pools Allowed:	Yes
Local Hospital:	Novant/Brunswick Hospital	Hospital Distance:	12 Miles
Set Builder List:	No	Required Time to Build:	No
Golf Cart Friendly:	No	HOA Includes Lawn Care:	No

SEA TRAIL PLANTATION

Sunset Beach, North Carolina



COMMUNITY AMENITIES

- 54 Holes of golf
- On-site dining
- Private beach parking
- Tennis/Pickleball courts
- Outdoor pools
- Indoor pool
- Fitness center
- Owners' clubhouse
- Owners' lounge
- Clubs & organizations
- Activity room
- Bocce ball courts
- Exercise studio
- Indoor jacuzzi
- Dry sauna
- Community library

COMMUNITY PROFILE

Total Build-Out:	2,200	Local Beach:	Sunset Beach
Completed Homes:	1,800	Time to Beach:	5 Minutes
Total Acreage:	2,000	Real Estate Offered:	Homes, Townhouses, Building Lots, Condominiums
Website:	www.seatrailhomes.com	Starting Home Prices:	Mid \$300s
2024 Annual HOA Fee:	\$1050	Starting Lot Prices:	\$50s
County Taxes (per \$100k):	\$345	Starting Price Condo:	High \$200s
City Taxes (per \$100k):	\$160	Starting Price Townhouse:	Mid \$300s
Local Hospital:	Novant/Brunswick Hospital	Hospital Distance:	12 Miles
Gated Neighborhood:	No	Golf Carts Permitted on Roads:	Yes

TOP LOCAL COMMUNITIES

CAMERON WOODS

Ocean Isle Beach, North Carolina



COMMUNITY AMENITIES

- Community Outdoor Pool
- Community Clubhouse
- Spacious Screened Lanai
- Two Pickleball Courts
- Fitness Room
- Lounge Area with Seating and Fireplace
- Clubhouse Kitchen
- Gated Entrance
- Trail (planned)
- 3 Miles to Area Beaches
- Golf Cart Friendly
- Dog Park (planned)

COMMUNITY PROFILE

Total Build-Out: 140	Local Beach: Ocean Isle Beach
Completed Homes: 115	Time to Beach: 3-4 Miles
Estimate Acreage: 90	Real Estate Offered: New Construction, Townhouses, PreOwned Homes
Website: www.cameronwoodsnc.com	Starting Home Prices: Mid \$300s
2024 Annual HOA Fee: \$1,440	Golf Cart Friendly: Yes
County Taxes (per \$100k): \$345	Water Source: Municipal
City Taxes (per \$100k): N/A	Sewer Source: Municipal
Local Hospital: Novant/Brunswick Hospital	HOA Includes Lawn Care: No
Hospital Distance: 12 Miles	Gated Neighborhood: Yes

DEVAUN PARK

Calabash, North Carolina



COMMUNITY AMENITIES

- Community Clubhouse
- Billiards Table & Game Tables
- Outdoor Pool
- Fitness Room
- Clubs & Organizations
- Owners' Lounge
- Walking & Biking Trails
- Community Park
- Activity Lawn
- Convenient to Area Beach
- Convenient to Restaurants & Shopping

COMMUNITY PROFILE

Total Build-Out: 415	Local Beach: Sunset Beach
Completed Homes: 315	Time to Beach: 5 Minutes
Total Acreage: 300	Real Estate Offered: Homes and Building Lots
Website: www.devaunparkrealestate.com	Starting Home Prices: Low \$400s
2024 Annual HOA Fee: \$1,200	Starting Lot Prices: \$30s
County Taxes (per \$100k): \$345	Time to Build: None
City Taxes (per \$100k): N/A	Hospital Distance: 7 Miles
Local Hospital: McLeod Hospital	Septic/Sewer: Sewer
Gated Neighborhood: No	Water Source: Public

FEATURED REAL ESTATE

HOME | 2105 CASTLEBRIDGE COURT NW | SPRING MILL PLANTATION

CONTACT: COLLEEN TEIFER • CELL: 609.868.2393 • EMAIL: CAROLINACOLLEEN@GMAIL.COM



Price: \$389,967
Heated Sq Ft: 1,698
Bedrooms: 3
Baths: 2

This cute home in the active community of Spring Mill Plantation is a must see! You will be wowed by the open and airy floor plan. The large kitchen has plenty of counter space, room for an eat-in table, and stools at the bar area. Adjacent to that, the dining area is open to the living room, which is in turn open to the sunroom. This seller has made some nice updates and improvements so you won't have to! Freshly painted with the addition of a sunroom, large patio, and gutters, this home is ready to go for a new set of owners. The primary bedrooms is a very comfortable size, and separate from the two guest bedrooms. The back yard is quite private, buffered by a wooded area. You can entertain until your heart's delight on this huge added patio too! Spring Mill Plantation is a very friendly and active community located in the town of Calabash.

[Learn More: www.Springmillrealestate.com](http://www.Springmillrealestate.com)

TWO GREAT LOTS LOCATED IN OCEAN RIDGE PLANTATION!

6815 PARNELL PLACE SW



Price: \$34,900
Acre: .46

This nearly ½ acre lot provides lots of flexibility for building your custom home. A great opportunity to secure a future dream home location in southeastern North Carolina's premier golf and beach community at a very reasonable price. Homes in this neighborhood must be a minimum of 2,200 heated square ft.

6820 PARNELL PLACE SW



Price: \$43,500
Acre: .41

Gorgeous, large building lot that backs to a private nature preserve area. Great opportunity to secure a future dream home location. Ocean Ridge Plantation is coastal NC's top golf and beach community offering 4 championship golf courses, ocean-front beach club, community garden, 3,500 sq/ft outdoor pavilion, indoor & outdoor pool, fitness room, and more.

[Learn more at www.OceanRidgePlantationHomes.com](http://www.OceanRidgePlantationHomes.com)

CONTACT: DARREN BOULEY • CELL: 910.431.7692 • EMAIL: DARREN@SILVERCOASTNC.COM



Price: \$349,000
Approx. Sq/ft: 1,762
Bedrooms: 3
Baths: 2
Year Built: 2003

Welcoming Home at 909 Elderberry Lane: Affordable Coastal Living. Situated in the friendly and accessible neighborhood of Sunset Beach, the inviting home offers a unique opportunity to enjoy coastal living at an affordable price. This cozy residence is ideally located three miles from the soft sands and calm waters of Sunset Beach, providing an ideal setting for those who cherish the beach lifestyle. This well-maintained 3-bedroom, 2-bath home features a desirable open floor plan with a spacious dining area and family room are perfect for entertaining. The kitchen offers ample countertop space and cabinetry with a gas range and all stainless steel appliances. The charming Carolina room and screened porch back to a densely wooded area.

[Learn more at www.silvercoastnc.com](http://www.silvercoastnc.com)

TWO GREAT PROPERTIES LOCATED IN CALABASH

CONTACT: DARREN BOULEY • CELL: 910.431.7692 • EMAIL: DARREN@SILVERCOASTNC.COM

1189 CLARIDAY ROAD SW



Price: \$199,999
Acre: .21

Amazing opportunity for a 2019 single wide manufactured home just minutes to the beach and the popular Calabash riverfront. This home offers 3-bedrooms, 2 full baths, has a beautiful yard and is great shape. Don't miss this opportunity for a great home at a great price. The home to the left is also available by the same owner. Listing is owned by a NC licensed real estate agent.

1193 CLARIDAY ROAD SW



Price: \$199,999
Acre: .20

Amazing opportunity for a 2019 single wide manufactured home just minutes to the beach and the popular Calabash riverfront. This home offers 3-bedrooms, 2 full baths, has a beautiful yard and is great shape. Don't miss this opportunity for a great home at a great price. This manufactured home has permanently affixed and has a brick foundation. The home to the right is also available by the same owner. Listing is owned by a NC licensed real estate agent.

[Learn more at www.silvercoastnc.com](http://www.silvercoastnc.com)

6584 WILLOWBANK PLACE SW

Price: \$665,000 • 4 Beds • 2.5 Baths • Year Built: 2003
Approx. Sq Ft: 2,752

This well maintained brick home exudes elegance and comfort with its classic architectural design and lush landscaping. Upon entering, you are greeted by the warmth of welcoming hardwood floors that flow seamlessly throughout the main living areas. The kitchen, is a culinary haven with its sleek countertops, ample cabinetry, counter seating and double oven. Learn more at www.Oceanridgeplantationhomes.com



Contact: Darren Bouley • Cell: 910.431.7692
Email: darren@silvercoastnc.com

1008 GREAT EGRET CIRCLE SW 43D

Price: \$249,000 • 2 Beds • 2 Baths • Year Built: 2004
Approx. Sq Ft: 1,008

Introducing a 2 bedroom, 2 bath condominium nestled within the tranquil Sandpiper Bay community in picturesque Sunset Beach. This exceptional condo offers the perfect blend of comfort, serenity, and scenic beauty, and the best part? It comes fully furnished, making it a turnkey dream. Located on a peaceful cul-de-sac, this charming residence with stunning views that will leave you breathless. Learn more at www.sandpiperbayrealestate.com



Contact: Darren Bouley • Cell: 910.431.7692
Email: darren@silvercoastnc.com

HOME | 1117 ENDEAVOUR WAY SW | SUNSET RIDGE

CONTACT: COLLEEN TEIFER • CELL: 609.868.2393 • EMAIL: CAROLINACOLLEEN@GMAIL.COM



Price: \$469, 000
3 Beds | 2 Baths
Year Built: 2012
Approx. Sq Ft: 1,953



Welcome to 1117 Endeavour Way in the active, social community of Sunset Ridge in Ocean Isle Beach! This home has been well cared for by a conscientious set of owners! With three bedrooms and two bathrooms on the first floor, and a bonus room upstairs, this floor plan is ideal. Imagine yourself sipping your morning coffee on your screened porch overlooking your backyard. The open floor plan is conducive both to daily living and entertaining. Engineered hardwood adorns the living area of the home, with carpet in the bedrooms and bonus room. This is truly easy living as the lawn care is included in your HOA dues. That will just add to your time to enjoy the many organized activities and groups not only in this community but in the entire area. There is literally something for everyone!

Learn more at www.sunsetridgenchomes.com

TOWNHOME | 620 EASTWOOD PARK ROAD UNIT 14B | SEA TRAIL PLANTATION

CONTACT: BILL ANDERSON • CELL: 910.880.9475 • EMAIL: LIVECOASTALNC@GMAIL.COM



Price: \$579,900
4 Beds | 4 Baths
Year Built: 2022
Approx. Sq Ft: 2,598

Nearly new and waiting for you! This almost 2600sqft golf front townhome was built in 2022 in beautiful Sea Trail Plantation and offers unparalleled space and location in an active neighborhood with amazing amenities. PLUS Sea Trail is less than 5 minutes to award winning Sunset Beach! 4 bedrooms and 3.5 baths on 3 levels give this home both privacy and ample room. Oh, and don't worry about the stairs because you have your own private elevator that services all 3 floors. The 1.5 car garage on the first floor has epoxy flooring and extra storage in addition to 4 storage closets on that level. The ground floor is completed by a large bedroom suite complete with a full bath and access to the golf front lower patio. On the second floor you will find the kitchen, living, and dining areas that lead out through the 3 panel sliding door to your elevated screened-in porch where you can watch the golfers and wildlife go by from the comfort of this unique indoor/outdoor space.

[Learn more at www.seatrailhomes.com](http://www.seatrailhomes.com)

HOME | 7189 BONAVENTURE STREET SW | SUNSET RIDGE

CONTACT: COLLEEN TEIFER • CELL: 609.868.2393 • EMAIL: CAROLINACOLLEEN@GMAIL.COM



Price: \$459,900
3 Beds | 2 Baths
Year Built: 2012
Approx. Sq Ft: 1,761

If you have been waiting for an open, airy home in the beautiful community of Sunset Ridge, then you are in luck! This one level home boasts 3 bedrooms, 2 full bathrooms, a large screened porch and a private backyard. The kitchen is completely open to the living room and dining area, and the vaulted ceiling contributes tremendously to the airy feeling. The arrangement of this floor plan is very efficient and livable. The home is complete with a full-home Generac generator with its own propane tank. Sunset Ridge in Ocean Isle Beach, NC is a friendly and active community with an extremely convenient location. Literally sitting right between the beaches of Ocean Isle Beach and Sunset Beach, you have your choice of the two.

[Learn more at www.sunsetridgenhomes.com](http://www.sunsetridgenhomes.com)

606 MAGNOLIA DRIVE | SUNSET BEACH

Price: \$225,000 • 3 Beds • 2 Baths • Year Built: 1986
Approx. Sq Ft: 923

Beautifully remodeled manufactured home located in Sunset Beach and a short distance to the pristine sands of Sunset Beach. This home has been remodeled from top to bottom, including newer: HVAC (2022), roof (2023), water heater (2022), LVP floors throughout, kitchen cabinets and granite countertops, bathrooms and more. Open and bright this is the perfect getaway or forever home. **Learn more at www.silvercoastnc.com.**



Contact: Darren Bouley • Cell: 910.431.7692
Email: darren@silvercoastnc.com

1282 LANDOVER DRIVE | THE RETREAT

Price: \$649,000 • 3 Beds • 3 Baths • Year Built: 2022
Approx. Sq Ft: 2,249

Welcome to The Retreat in Ocean Isle Beach, located roughly five minutes from the beach. In fact, you can even take a golf cart there. This spacious, open and airy home will take your breath away. Natural light floods into the home, showcasing the beautiful pond view that can be seen from the entire living area. The master bedroom is quite generous in size and also reaps the benefit of the lovely pond view. **Learn more at www.retreattoib.com**



Contact: Colleen Teifer • Cell: 609.868.2393
Email: carolinacolleen@gmail.com

LAND FOR SALE

LAND • OCEAN RIDGE PLANTATION

6952 Rosebury Ct, Ocean Isle Beach



Price: \$32,900
Acres: .48
MLS ID: 100387276
Status: Active
Contact: Bill Anderson
Cell: (910) 880-9475
livecoastlnc@gmail.com

LAND • OCEAN RIDGE PLANTATION

132 Windsor Circle SW, Ocean Isle Beach



Price: \$69,000
Acres: .33
MLS ID: 100395665
Status: Active
Contact: Bill Anderson
Cell: (910) 880-9475
livecoastlnc@gmail.com

LAND • OCEAN RIDGE PLANTATION

525 Stratton Place SW 34, Ocean Isle Beach



Price: \$45,900
Acres: 0.37
MLS ID: 100254470
Status: Active
Contact: Colleen Teifer
Cell: (609) 868-2393
carolinacolleen@gmail.com

LAND • OCEAN RIDGE PLANTATION

742 Highgate Place SW, Ocean Isle Beach



Price: \$35,000
Acres: .23
Setting: Water View
MLS ID: 100407449
Status: Active
Contact: Darren Bouley
Cell: (910) 431-7692
darren@silvercoastnc.com

EVENTS & ACTIVITIES

Join the fun this winter and enjoy some local flavor at southeastern North Carolina's events and activities.

PILATES & PROSECCO

Date: Thursday, Feb 1, 2024

Time: 5:30 - 7:30 PM

Location: Coastal Pilates

Address: 1790 Queen Anne, Sunset Beach, NC
Get your work out on with Pilates and indulge in some bubbly fun with our Pilates & Prosecco event. Let's get you on the Pilates reformer and show you how much fun you can have while working out.

SOUPER SATURDAY SOUP SAMPLING EVENT

Date: Saturday, Feb 3, 2024

Time: 5:00 - 7:00 PM

Location: Museum of Coastal Carolina

Address: 21 E 2nd St, Ocean Isle Beach, NC
Doesn't a gathering to sample soups from local cooks sound like a great way to spend a coastal winter evening? We think so, and that's why the Ocean Isle Museum Foundation will host its Second Annual SOUPER Saturday.

SEA SHELL HEART ART CLASS

Date: Saturday, Feb 3, 2024

Time: 4:30 PM

Location: The Painted Potter

Address: 611 Main St, North Myrtle Beach, SC 29582

Design your own sea shell heart wall art. All materials and supplies included to create your master piece.

6 YEARS OF BEERS ANNIVERSARY PARTY

Date: Sunday, Feb 4, 2024

Time: 11:00 AM - 7:00 PM

Location: Makai Brewery

Address: 5850 Ocean Highway West, Ocean Isle Beach

Come celebrate our 6 Years of Beers! Makai Brewing Company is celebrating our 6th year! We have a jam packed day of great music, great food and great beer! Bring your friends, family and even your dog! You won't want to miss it!

SUNSET BEACH BLITZ SCAVENGER HUNT

Date: Sunday, Feb 11, 2024

Time: 2:00 - 4:00 PM

Location: Coastal Grounds

Address: 424 Sunset Blvd South #Unit 1, Sunset Beach,

Sunset Beach Blitz Scavenger Hunt is happening on Sunday February 11 2024 .To access further details about this event please go to their website and access the link.

GALENTINES YOGA @ MAKAI

Date: Monday, Feb 12, 2024

Time: 6:30 PM

Location: Makai Brewery

Address: 5850 Ocean Hwy W, OIB

This special Yoga event is for Ladies only, and is intended to guide you to a calm and supportive state of mind and body. You deserve to take a breath and show yourself some love, so I hope you'll grab your mat and come on out!

RUN OAK ISLAND

Date: Saturday, Feb 19, 2024

Time: 7:30 AM

Location: Southport, NC

Runners, joggers, and walkers of all ages and abilities can explore the scenic coastal landscape of Oak Island while enjoying an invigorating dose of activity.

MARDI GRAS BY THE SEA PARADE AND FESTIVAL

Date: Saturday, Feb 24, 2024

Time: 12:00 PM to 4:00 PM

Location: Middleton Park

Address: SE 46th Street, Oak Island, NC 28465

The Mardi Gras by the Sea Parade and Festival returns on Saturday, February 24, 2024! The parade begins at 1:00 p.m. starting at Keziah Street. There will also be activities and events such as an artisan market, food vendors, kids zone and a concert performance from local favorite The 52nd Street Band.

NMB ST. PATRICK'S DAY PARADE AND FESTIVAL

Date: Saturday, March 16, 2024

Time: 9:00 AM - 5:00 PM

Location: North Myrtle Beach

North Myrtle Beach welcomes you to a sea of green! The St. Patrick's Day Parade is the largest on the Grand Strand with over 100 parade entries and a long history of fun. Masses of people line Main Street each year to get a glimpse of this magical parade.

OIB SPRING MARKET

Date: Saturday, March 30, 2024

Time: 10:00 AM - 3:00 PM

Location: Ocean Isle Beach

Address: 5 E Third St, OIB

Annual SPRING MARKET with over 80 vendors. Food Trucks, pet friendly. All items sold at Pure Markets are HANDMADE, HOMEMADE or HOMEGROWN.

Looking to call the beach home,
give us a call at 800.975.6024 or
visit www.silvercoastnc.com

2024 Tide Chart - Sunset Beach Pier

January			February			March		
Time	Height		Time	Height		Time	Height	
1 04:24 AM 0.5	16 04:58 AM -0.2	1 05:12 AM 0.9	16 12:28 AM 5.4	16 01:02 AM 1.1	16 01:02 AM 5.6	16 01:02 AM 5.6	17 01:02 AM 5.6	17 01:02 AM 5.6
10:45 AM 4.4	11:15 AM 5.3	10:45 AM 4.4	10:45 AM 4.4	10:45 AM 4.4	10:45 AM 4.4	10:45 AM 4.4	10:45 AM 4.4	10:45 AM 4.4
M 05:01 PM 0.6	Tu 05:29 PM 0.5	M 05:01 PM 0.6	F 05:29 PM 0.5	F 05:29 PM 0.5	F 05:29 PM 0.5	F 05:29 PM 0.5	F 05:29 PM 0.5	F 05:29 PM 0.5
11:30 PM 3.9	11:52 PM 5.1	11:30 PM 3.9	11:52 PM 5.1	11:52 PM 5.1	11:52 PM 5.1	11:52 PM 5.1	11:52 PM 5.1	11:52 PM 5.1
2 05:08 AM 0.8	17 06:00 AM 0.2	2 05:08 AM 0.8	17 06:00 AM 0.2	2 05:08 AM 0.8	17 06:00 AM 0.2	2 05:08 AM 0.8	17 06:00 AM 0.2	2 05:08 AM 0.8
11:35 AM 4.2	12:16 PM 5.0	11:35 AM 4.2	12:16 PM 5.0	11:35 AM 4.2	12:16 PM 5.0	11:35 AM 4.2	12:16 PM 5.0	11:35 AM 4.2
Tu 05:40 PM 0.7	W 06:24 PM -0.3	Tu 05:40 PM 0.7	W 06:24 PM -0.3	Tu 05:40 PM 0.7	W 06:24 PM -0.3	Tu 05:40 PM 0.7	W 06:24 PM -0.3	Tu 05:40 PM 0.7
3 12:17 AM 4.0	18 12:51 AM 5.1	3 12:17 AM 4.0	18 12:51 AM 5.1	3 12:17 AM 4.0	18 12:51 AM 5.1	3 12:17 AM 4.0	18 12:51 AM 5.1	3 12:17 AM 4.0
05:58 AM 0.9	07:11 AM 0.5	05:58 AM 0.9	07:11 AM 0.5	05:58 AM 0.9	07:11 AM 0.5	05:58 AM 0.9	07:11 AM 0.5	05:58 AM 0.9
W 12:15 PM 4.0	Th 01:13 PM 4.6	W 12:15 PM 4.0	Th 01:13 PM 4.6	W 12:15 PM 4.0	Th 01:13 PM 4.6	W 12:15 PM 4.0	Th 01:13 PM 4.6	W 12:15 PM 4.0
06:25 PM 0.7	F 07:26 PM -0.1	06:25 PM 0.7	F 07:26 PM -0.1	06:25 PM 0.7	F 07:26 PM -0.1	06:25 PM 0.7	F 07:26 PM -0.1	06:25 PM 0.7
4 01:02 AM 4.1	19 01:49 AM 5.1	4 01:02 AM 4.1	19 01:49 AM 5.1	4 01:02 AM 4.1	19 01:49 AM 5.1	4 01:02 AM 4.1	19 01:49 AM 5.1	4 01:02 AM 4.1
06:50 AM 1.1	08:28 AM 0.8	06:50 AM 1.1	08:28 AM 0.8	06:50 AM 1.1	08:28 AM 0.8	06:50 AM 1.1	08:28 AM 0.8	06:50 AM 1.1
Th 12:58 PM 3.9	F 02:12 PM 4.3	Th 12:58 PM 3.9	F 02:12 PM 4.3	Th 12:58 PM 3.9	F 02:12 PM 4.3	Th 12:58 PM 3.9	F 02:12 PM 4.3	Th 12:58 PM 3.9
F 07:16 PM 0.7	08:31 PM 0.1	F 07:16 PM 0.7	08:31 PM 0.1	F 07:16 PM 0.7	08:31 PM 0.1	F 07:16 PM 0.7	08:31 PM 0.1	F 07:16 PM 0.7
5 01:46 AM 4.3	20 02:48 AM 5.1	5 01:46 AM 4.3	20 02:48 AM 5.1	5 01:46 AM 4.3	20 02:48 AM 5.1	5 01:46 AM 4.3	20 02:48 AM 5.1	5 01:46 AM 4.3
07:59 AM 1.1	09:38 AM 0.6	07:59 AM 1.1	09:38 AM 0.6	07:59 AM 1.1	09:38 AM 0.6	07:59 AM 1.1	09:38 AM 0.6	07:59 AM 1.1
F 01:46 PM 3.6	Sa 03:12 PM 4.2	F 01:46 PM 3.6	Sa 03:12 PM 4.2	F 01:46 PM 3.6	Sa 03:12 PM 4.2	F 01:46 PM 3.6	Sa 03:12 PM 4.2	F 01:46 PM 3.6
08:15 PM 0.7	09:31 PM 0.1	08:15 PM 0.7	09:31 PM 0.1	08:15 PM 0.7	09:31 PM 0.1	08:15 PM 0.7	09:31 PM 0.1	08:15 PM 0.7
6 02:38 AM 4.5	21 03:48 AM 5.1	6 02:38 AM 4.5	21 03:48 AM 5.1	6 02:38 AM 4.5	21 03:48 AM 5.1	6 02:38 AM 4.5	21 03:48 AM 5.1	6 02:38 AM 4.5
09:29 AM 0.9	10:34 AM 0.6	09:29 AM 0.9	10:34 AM 0.6	09:29 AM 0.9	10:34 AM 0.6	09:29 AM 0.9	10:34 AM 0.6	09:29 AM 0.9
Sa 02:38 PM 3.7	Su 04:13 PM 4.1	Sa 02:38 PM 3.7	Su 04:13 PM 4.1	Sa 02:38 PM 3.7	Su 04:13 PM 4.1	Sa 02:38 PM 3.7	Su 04:13 PM 4.1	Sa 02:38 PM 3.7
09:19 PM 0.5	10:24 PM 0.0	09:19 PM 0.5	10:24 PM 0.0	09:19 PM 0.5	10:24 PM 0.0	09:19 PM 0.5	10:24 PM 0.0	09:19 PM 0.5
7 03:32 AM 4.8	22 04:48 AM 5.2	7 03:32 AM 4.8	22 04:48 AM 5.2	7 03:32 AM 4.8	22 04:48 AM 5.2	7 03:32 AM 4.8	22 04:48 AM 5.2	7 03:32 AM 4.8
10:04 AM 0.7	11:26 AM 0.5	10:04 AM 0.7	11:26 AM 0.5	10:04 AM 0.7	11:26 AM 0.5	10:04 AM 0.7	11:26 AM 0.5	10:04 AM 0.7
Su 03:37 PM 3.8	M 05:10 PM 4.2	Su 03:37 PM 3.8	M 05:10 PM 4.2	Su 03:37 PM 3.8	M 05:10 PM 4.2	Su 03:37 PM 3.8	M 05:10 PM 4.2	Su 03:37 PM 3.8
10:04 PM 0.2	11:14 PM -0.1	10:04 PM 0.2	11:14 PM -0.1	10:04 PM 0.2	11:14 PM -0.1	10:04 PM 0.2	11:14 PM -0.1	10:04 PM 0.2
8 04:24 AM 5.1	23 05:41 AM 5.3	8 04:24 AM 5.1	23 05:41 AM 5.3	8 04:24 AM 5.1	23 05:41 AM 5.3	8 04:24 AM 5.1	23 05:41 AM 5.3	8 04:24 AM 5.1
10:58 AM 0.4	12:13 PM 0.5	10:58 AM 0.4	12:13 PM 0.5	10:58 AM 0.4	12:13 PM 0.5	10:58 AM 0.4	12:13 PM 0.5	10:58 AM 0.4
M 04:35 PM 3.9	Tu 06:01 PM 4.3	M 04:35 PM 3.9	Tu 06:01 PM 4.3	M 04:35 PM 3.9	Tu 06:01 PM 4.3	M 04:35 PM 3.9	Tu 06:01 PM 4.3	M 04:35 PM 3.9
08:15 PM -0.1	10:24 PM 0.0	08:15 PM -0.1	10:24 PM 0.0	08:15 PM -0.1	10:24 PM 0.0	08:15 PM -0.1	10:24 PM 0.0	08:15 PM -0.1
9 05:22 AM 5.5	24 06:02 AM 5.5	9 05:22 AM 5.5	24 06:02 AM 5.5	9 05:22 AM 5.5	24 06:02 AM 5.5	9 05:22 AM 5.5	24 06:02 AM 5.5	9 05:22 AM 5.5
11:50 AM 0.1	06:28 AM 5.3	11:50 AM 0.1	06:28 AM 5.3	11:50 AM 0.1	06:28 AM 5.3	11:50 AM 0.1	06:28 AM 5.3	11:50 AM 0.1
Tu 05:38 PM 4.2	W 06:54 PM 5.4	Tu 05:38 PM 4.2	W 06:54 PM 5.4	Tu 05:38 PM 4.2	W 06:54 PM 5.4	Tu 05:38 PM 4.2	W 06:54 PM 5.4	Tu 05:38 PM 4.2
11:45 PM -0.4	06:34 PM 5.4	11:45 PM -0.4	06:34 PM 5.4	11:45 PM -0.4	06:34 PM 5.4	11:45 PM -0.4	06:34 PM 5.4	11:45 PM -0.4
10 06:14 AM 5.9	25 06:46 AM 5.9	10 06:14 AM 5.9	25 06:46 AM 5.9	10 06:14 AM 5.9	25 06:46 AM 5.9	10 06:14 AM 5.9	25 06:46 AM 5.9	10 06:14 AM 5.9
12:20 PM -0.1	07:07 AM 5.3	12:20 PM -0.1	07:07 AM 5.3	12:20 PM -0.1	07:07 AM 5.3	12:20 PM -0.1	07:07 AM 5.3	12:20 PM -0.1
W 06:22 PM 4.5	Th 07:34 PM 5.4	W 06:22 PM 4.5	Th 07:34 PM 5.4	W 06:22 PM 4.5	Th 07:34 PM 5.4	W 06:22 PM 4.5	Th 07:34 PM 5.4	W 06:22 PM 4.5
11 12:38 AM -0.7	26 07:41 AM 6.2	11 12:38 AM -0.7	26 07:41 AM 6.2	11 12:38 AM -0.7	26 07:41 AM 6.2	11 12:38 AM -0.7	26 07:41 AM 6.2	11 12:38 AM -0.7
07:01 AM 6.2	07:43 AM 5.3	07:01 AM 6.2	07:43 AM 5.3	07:01 AM 6.2	07:43 AM 5.3	07:01 AM 6.2	07:43 AM 5.3	07:01 AM 6.2
Th 01:29 PM -0.4	F 02:09 PM 6.3	Th 01:29 PM -0.4	F 02:09 PM 6.3	Th 01:29 PM -0.4	F 02:09 PM 6.3	Th 01:29 PM -0.4	F 02:09 PM 6.3	Th 01:29 PM -0.4
F 07:10 PM 4.7	07:34 PM 4.8	F 07:10 PM 4.7	07:34 PM 4.8	F 07:10 PM 4.7	07:34 PM 4.8	F 07:10 PM 4.7	07:34 PM 4.8	F 07:10 PM 4.7
12 01:28 AM -0.8	27 08:04 AM 6.8	12 01:28 AM -0.8	27 08:04 AM 6.8	12 01:28 AM -0.8	27 08:04 AM 6.8	12 01:28 AM -0.8	27 08:04 AM 6.8	12 01:28 AM -0.8
07:46 AM 6.3	08:16 AM 5.2	07:46 AM 6.3	08:16 AM 5.2	07:46 AM 6.3	08:16 AM 5.2	07:46 AM 6.3	08:16 AM 5.2	07:46 AM 6.3
F 08:15 PM 4.8	Sa 08:45 PM 6.8	F 08:15 PM 4.8	Sa 08:45 PM 6.8	F 08:15 PM 4.8	Sa 08:45 PM 6.8	F 08:15 PM 4.8	Sa 08:45 PM 6.8	F 08:15 PM 4.8
08:00 PM 4.9	08:36 PM 4.5	08:00 PM 4.9	08:36 PM 4.5	08:00 PM 4.9	08:36 PM 4.5	08:00 PM 4.9	08:36 PM 4.5	08:00 PM 4.9
13 02:28 AM -0.9	28 08:41 AM 6.8	13 02:28 AM -0.9	28 08:41 AM 6.8	13 02:28 AM -0.9	28 08:41 AM 6.8	13 02:28 AM -0.9	28 08:41 AM 6.8	13 02:28 AM -0.9
08:35 AM 6.2	08:48 AM 5.0	08:35 AM 6.2	08:48 AM 5.0	08:35 AM 6.2	08:48 AM 5.0	08:35 AM 6.2	08:48 AM 5.0	08:35 AM 6.2
Sa 03:05 PM -0.7	Su 03:15 PM 0.4	Sa 03:05 PM -0.7	Su 03:15 PM 0.4	Sa 03:05 PM -0.7	Su 03:15 PM 0.4	Sa 03:05 PM -0.7	Su 03:15 PM 0.4	Sa 03:05 PM -0.7
08:52 PM 5.0	09:14 AM 4.4	08:52 PM 5.0	09:14 AM 4.4	08:52 PM 5.0	09:14 AM 4.4	08:52 PM 5.0	09:14 AM 4.4	08:52 PM 5.0
14 03:11 AM -0.8	29 09:17 AM 6.3	14 03:11 AM -0.8	29 09:17 AM 6.3	14 03:11 AM -0.8	29 09:17 AM 6.3	14 03:11 AM -0.8	29 09:17 AM 6.3	14 03:11 AM -0.8
09:27 AM 6.0	09:22 AM 4.7	09:27 AM 6.0	09:22 AM 4.7	09:27 AM 6.0	09:22 AM 4.7	09:27 AM 6.0	09:22 AM 4.7	09:27 AM 6.0
Su 03:50 PM -0.7	M 03:47 PM 0.4	Su 03:50 PM -0.7	M 03:47 PM 0.4	Su 03:50 PM -0.7	M 03:47 PM 0.4	Su 03:50 PM -0.7	M 03:47 PM 0.4	Su 03:50 PM -0.7
09:40 PM 5.0	09:55 PM 4.3	09:40 PM 5.0	09:55 PM 4.3	09:40 PM 5.0	09:55 PM 4.3	09:40 PM 5.0	09:55 PM 4.3	09:40 PM 5.0
15 04:04 AM -0.5	30 09:53 AM 6.5	15 04:04 AM -0.5	30 09:53 AM 6.5	15 04:04 AM -0.5	30 09:53 AM 6.5	15 04:04 AM -0.5	30 09:53 AM 6.5	15 04:04 AM -0.5
10:22 AM 5.7	09:58 AM 4.5	10:22 AM 5.7	09:58 AM 4.5	10:22 AM 5.7	09:58 AM 4.5	10:22 AM 5.7	09:58 AM 4.5	10:22 AM 5.7
M 04:38 PM -0.7	Tu 04:19 PM 0.6	M 04:38 PM -0.7	Tu 04:19 PM 0.6	M 04:38 PM -0.7	Tu 04:19 PM 0.6	M 04:38 PM -0.7	Tu 04:19 PM 0.6	M 04:38 PM -0.7
10:55 PM 5.1	10:39 PM 4.3	10:55 PM 5.1	10:39 PM 4.3	10:55 PM 5.1	10:39 PM 4.3	10:55 PM 5.1	10:39 PM 4.3	10:55 PM 5.1
31 04:30 AM 0.7	31 04:30 AM 0.7	31 04:30 AM 0.7	31 04:30 AM 0.7	31 04:30 AM 0.7	31 04:30 AM 0.7	31 04:30 AM 0.7	31 04:30 AM 0.7	31 04:30 AM 0.7
10:39 AM 4.3	10:39 AM 4.3	10:39 AM 4.3	10:39 AM 4.3	10:39 AM 4.3	10:39 AM 4.3	10:39 AM 4.3	10:39 AM 4.3	10:39 AM 4.3
W 04:52 PM 0.7	W 04:52 PM 0.7	W 04:52 PM 0.7	W 04:52 PM 0.7	W 04:52 PM 0.7	W 04:52 PM 0.7	W 04:52 PM 0.7	W 04:52 PM 0.7	W 04:52 PM 0.7
11:25 PM 4.3	11:25 PM 4.3	11:25 PM 4.3	11:25 PM 4.3	11:25 PM 4.3	11:25 PM 4.3	11:25 PM 4.3	11:25 PM 4.3	11:25 PM 4.3

April				May				June			
Time	Height	Time	Height	Time	Height	Time	Height	Time	Height	Time	Height
1 04:24 AM 0.5	16 04:58 AM -0.2	1 05:12 AM 0.9	16 12:28 AM 5.4	16 01:02 AM 1.1	16 01:02 AM 5.6	16 01:02 AM 5.6	17 01:02 AM 5.6	16 01:02 AM 5.6	17 01:02 AM 5.6	16 01:02 AM 5.6	17 01:02 AM 5.6
10:45 AM 4.4	11:15 AM 5.3	10:45 AM 4.4	11:15 AM 5.3	10:45 AM 4.4	11:15 AM 5.3	10:45 AM 4.4	11:15 AM 5.3	10:45 AM 4.4	11:15 AM 5.3	10:45 AM 4.4	11:15 AM 5.3
M 05:01 PM 0.6	Tu 05:29 PM 0.5	M 05:01 PM 0.6	Tu 05:29 PM 0.5	M 05:01 PM 0.6	Tu 05:29 PM 0.5	M 05:01 PM 0.6	Tu 05:29 PM 0.5	M 05:01 PM 0.6	Tu 05:29 PM 0.5	M 05:01 PM 0.6	Tu 05:29 PM 0.5
11:30 PM 3.9	11:52 PM 5.1	11:30 PM 3.9	11:52 PM 5.1	11:30 PM 3.9	11:52 PM 5.1	11:30 PM 3.9	11:52 PM 5.1	11:30 PM 3.9	11:52 PM 5.1	11:30 PM 3.9	11:52 PM 5.1
2 05:08 AM 0.8	17 06:00 AM 0.2	2 05:08 AM 0.8	17 06:00 AM 0.2	2 05:08 AM 0.8	17 06:00 AM 0.2	2 05:08 AM 0.8	17 06:00 AM 0.2	2 05:08 AM 0.8	17 06:00 AM 0.2	2 05:08 AM 0.8	17 06:00 AM 0.2
11:35 AM 4.2	12:16 PM 5.0	11:35 AM 4.2	12:16 PM 5.0	11:35 AM 4.2	12:16 PM 5.0	11:35 AM 4.2	12:16 PM 5.0	11:35 AM 4.2	12:16 PM 5.0	11:35 AM 4.2	12:16 PM 5.0
Tu 05:40 PM 0.7	W 06:24 PM -0.3	Tu 05:40 PM 0.7	W 06:24 PM -0.3	Tu 05:40 PM 0.7	W 06:24 PM -0.3	Tu 05:40 PM 0.7	W 06:24 PM -0.3	Tu 05:40 PM 0.7	W 06:24 PM -0.3	Tu 05:40 PM 0.7	W 06:24 PM -0.3
3 12:17 AM 4.0	18 12:51 AM 5.1	3 12:17 AM 4.0	18 12:51 AM 5.1	3 12:17 AM 4.0	18 12:51 AM 5.1	3 12:17 AM 4.0	18 12:51 AM 5.1	3 12:17 AM 4.0	18 12:51 AM 5.1	3 12:17 AM 4.0	18 12:51 AM 5.1
05:58 AM 0.9	07:11 AM 0.5	05:58 AM 0.9	07:11 AM 0.5	05:58 AM 0.9	07:11 AM 0.5	05:58 AM 0.9	07:11 AM 0.5	05:58 AM 0.9	07:11 AM 0.5	05:58 AM 0.9	07:11 AM 0.5
W 12:15 PM 4.0	Th 01:13 PM 4.6	W 12:15 PM 4.0	Th 01:13 PM 4.6	W 12:15 PM 4.0	Th 01:13 PM 4.6	W 12:15 PM 4.0	Th 01:13 PM 4.6	W 12:15 PM 4.0	Th 01:13 PM 4.6	W 12:15 PM 4.0	Th 01:13 PM 4.6
06:25 PM 0.7	F 07:26 PM -0.1	06:25 PM 0.7	F 07:26 PM -0.1	06:25 PM 0.7	F 07:26 PM -0.1	06:25 PM 0.7	F 07:26 PM -0.1	06:25 PM 0.7	F 07:26 PM -0.1	06:25 PM 0.7	F 07:26 PM -0.1
4 01:02 AM 4.1	19 01:49 AM 5.1	4 01:02 AM 4.1	19 01:49 AM 5.1	4 01:02 AM 4.1	19 01:49 AM 5.1	4 01:02 AM 4.1	19 01:49 AM 5.1	4 01:02 AM 4.1	19 01:49 AM 5.1	4 01:02 AM 4.1	19 01:49 AM 5.1
06:50 AM 1.1	08:28 AM 0.8	06:50 AM 1.1	08:28 AM 0.8	06:50 AM 1.1	08:28 AM 0.8	06:50 AM 1.1	08:28 AM 0.8	06:50 AM 1.1	08:28 AM 0.8	06:50 AM 1.1	08:28 AM 0.8
Th 12:58 PM 3.9	F 02:12 PM 4.3	Th 12:58 PM 3.9	F 02:12 PM 4.3	Th 12:58 PM 3.9	F 02:12 PM 4.3	Th 12:58 PM 3.9	F 02:12 PM 4.3	Th 12:58 PM 3.9	F 02:12 PM 4.3	Th 12:58 PM 3.9	F 02:12 PM 4.3
F 07:16 PM 0.7	08:31 PM 0.1	F 07:16 PM 0.7	08:31 PM 0.1	F 07:16 PM 0.7	08:31 PM 0.1	F 07:16 PM 0.7	08:31 PM 0.1	F 07:16 PM 0.7	08:31 PM 0.1	F 07:16 PM 0.7	08:31 PM 0.1
5 01:46 AM 4.3	20 02:48 AM 5.1	5 01:46 AM 4.3	20 02:48 AM 5.1	5 01:46 AM 4.3	20 02:48 AM 5.1	5 01:46 AM 4.3	20 02:48 AM 5.1	5 01:46 AM 4.3	20 02:48 AM 5.1	5 01:46 AM 4.3	20 02:48 AM 5.1
07:59 AM 1.1	09:38 AM 0.6	07:59 AM 1.1	09:38 AM 0.6	07:59 AM 1.1	09:38 AM 0.6	07:59 AM 1.1	09:38 AM 0.6	07:59 AM 1.1	09:38 AM 0.6	07:59 AM 1.1	09:38 AM 0.6
F 01:46 PM 3.6	Sa 03:12 PM 4.2	F 01:46 PM 3.6	Sa 03:12 PM 4.2	F 01:46 PM 3.6	Sa 03:12 PM 4.2	F 01:46 PM 3.6	Sa 03:12 PM 4.2	F 01:46 PM 3.6	Sa 03:12 PM 4.2	F 01:46 PM 3.6	Sa 03:12 PM 4.2
6 02:34 AM 4.5	21 03:44 AM 5.2	6 02:34 AM 4.5	21 03:44 AM 5.2	6 02:34 AM 4.5	21 03:44 AM 5.2	6 02:34 AM 4.5	21 03:44 AM 5.2	6 02:34 AM 4.5	21 03:44 AM 5.2	6 02:34 AM 4.5	21 03:44 AM 5.2
08:42 AM 1.2	10:00 AM 0.7	08:42 AM 1.2	10:00 AM 0.7	08:42 AM 1.2	10:00 AM 0.7	08:42 AM 1.2	10:00 AM 0.7	08:42 AM 1.2	10:00 AM 0.7	08:42 AM 1.2	10:00 AM 0.7
Sa 12:44 PM 3.7	Su 01:38 PM 4.3	Sa 12:44 PM 3.7	Su 01:38 PM 4.3	Sa 12:44 PM 3.7	Su 01:38 PM 4.3	Sa 12:44 PM 3.7	Su 01:38 PM 4.3	Sa 12:44 PM 3.7	Su 01:38 PM 4.3	Sa 12:44 PM 3.7	Su 01:38 PM 4.3
09:09 PM 0.8	10:21 PM 0.2	09:09 PM 0.8	10:21 PM 0.2	09:09 PM 0.8	10:21 PM 0.2	09:09 PM 0.8	10:21 PM 0.2	09:09 PM 0.8	10:21 PM 0.2	09:09 PM 0.8	10:21 PM 0.2
7 03:22 AM 4.6	22 04:42 AM 5.3	7 03:22 AM 4.6	22 04:42 AM 5.3	7 03:22 AM 4.6	22 04:42 AM 5.3	7 03:22 AM 4.6	22 04:42 AM 5.3	7 03:22 AM 4.6	22 04:42 AM 5.3	7 03:22 AM 4.6	22 04:42 AM 5.3
09:56 AM 1.3	11:00 AM 0.8	09:56 AM 1.3	11:00 AM 0.8	09:56 AM 1.3	11:00 AM 0.8	09:56 AM 1.3	11:00 AM 0.8	09:56 AM 1.3	11:00 AM 0.8	09:56 AM 1.3	11:00 AM 0.8
Su 12:52 PM 3.8	Mo 01:46 PM 4.4	Su 12:52 PM 3.8	Mo 01:46 PM 4.4	Su 12:52 PM 3.8	Mo 01:46 PM 4.4	Su 12:52 PM 3.8	Mo 01:46 PM 4.4	Su 12:52 PM 3.8	Mo 01:46 PM 4.4	Su 12:52 PM 3.8	Mo 01:46 PM 4.4
10:36 PM 0.9	11:56 PM 0.3	10:36 PM 0.9	11:56 PM 0.3	10:36 PM 0.9	11:56 PM 0.3	10:36 PM 0.9	11:56 PM 0.3	10:36 PM 0.9	11:56 PM 0.3	10:36 PM 0.9	11:56 PM 0.3
8 04:10 AM 4.7	23 05:42 AM 5.4	8 04:10 AM 4.7	23 05:42 AM 5.4	8 04:10 AM 4.7	23 05:42 AM 5.4	8 04:10 AM 4.7	23 05:42 AM 5.4	8 04:10 AM 4.7	23 05:42 AM 5.4	8 04:10 AM 4.7	23 05:42 AM 5.4
10:52 AM 1.4	12:00 PM 0.9	10:52 AM 1.4	12:00 PM 0.9	10:52 AM 1.4	12:00 PM 0.9	10:52 AM 1.4	12:00 PM 0.9	10:52 AM 1.4	12:00 PM 0.9	10:52 AM 1.4	12:00 PM 0.9
Mo 12:58 PM 3.9	Tu 01:52 PM 4.5	Mo 12:58 PM 3.9	Tu 01:52 PM 4.5	Mo 12:58 PM 3.9	Tu 01:52 PM 4.5	Mo 12:58 PM 3.9	Tu 01:52 PM 4.5	Mo 12:58 PM 3.9	Tu 01:52 PM 4.5	Mo 12:58 PM 3.9	Tu 01:52 PM 4.5
11:23 PM 1.0	12:52 PM 0.4	11:23 PM 1.0	12:52 PM 0.4	11:23 PM 1.0	12:52 PM 0.4	11:23 PM 1.0	12:52 PM 0.4	11:23 PM 1.0	12:52 PM 0.4	11:23 PM 1.0	12:52 PM 0.4
9 04:58 AM 4.8	24 06:42 AM 5.5	9 04:58 AM 4.8	24 06:42 AM 5.5	9 04:58 AM 4.8	24 06:42 AM 5.5	9 04:58 AM 4.8	24 06:42 AM 5.5	9 04:58 AM 4.8	24 06:42 AM 5.5	9 04:58 AM 4.8	24 06:42 AM 5.5
11:38 AM 1.5	12:50 PM 1.0	11:38 AM 1.5	12:50 PM 1.0	11:38 AM 1.5	12:50 PM 1.0	11:38 AM 1.5	12:50 PM 1.0	11:38 AM 1.5	12:50 PM 1.0	11:38 AM 1.5	12:50 PM 1.0
Tu 12:58 PM 3.9	W 01:46 PM 4.6	Tu 12:58 PM 3.9	W 01:46 PM 4.6	Tu 12:58 PM 3.9	W 01:46 PM 4.6	Tu 12:58 PM 3.9	W 01:46 PM 4.6	Tu 12:58 PM 3.9	W 01:46 PM 4.6	Tu 12:58 PM 3.9	W 01:46 PM 4.6
12:08 PM 1.1	13:46 PM 0.5	12:08 PM 1.1	13:46 PM 0.5	12:08 PM 1.1	13:46 PM 0.5	12:08 PM 1.1	13:46 PM 0.5	12:08 PM 1.1	13:46 PM 0.5	12:08 PM 1.1	13:46 PM 0.5
10 05:46 AM 4.9	25 07:42 AM 5.6	10 05:46 AM 4.9	25 07:42 AM 5.6	10 05:46 AM 4.9	25 07:42 AM 5.6	10 05:46 AM 4.9	25 07:42 AM 5.6	10 05:46 AM 4.9	25 07:42 AM 5.6	10 05:46 AM 4.9	25 07:42 AM 5.6
12:24 PM 1.2	13:50 PM 1.1	12:24 PM 1.2	13:50 PM 1.1	12:24 PM 1.2	13:50 PM 1.1	12:24 PM 1.2	13:50 PM 1.1	12:24 PM 1.2	13:50 PM 1.1	12:24 PM 1.2	13:50 PM 1.1
W 12:58 PM 3.9	Th 01:46 PM 4.7	W 12:58 PM 3.9	Th 01:46 PM 4.7	W 12:58 PM 3.9	Th 01:46 PM 4.7	W 12:58 PM 3.9	Th 01:46 PM 4.7	W 12:58 PM 3.9	Th 01:46 PM 4.7	W 12:58 PM 3.9	Th 01:46 PM 4.7
13:04 PM 1.2	14:46 PM 0.6	13:04 PM 1.2	14:46 PM 0.6	13:04 PM 1.2	14:46 PM 0.6	13:04 PM 1.2	14:46 PM 0.6	13:04 PM 1.2	14:46 PM 0.6	13:04 PM 1.2	14:46 PM 0.6
11 06:34 AM 5.0	26 08:42 AM 5.7	11 06:34 AM 5.0	26 08:42 AM 5.7	11 06:34 AM 5.0	26 08:42 AM 5.7	11 06:34 AM 5.0	26 08:42 AM 5.7	11 06:34 AM 5.0	26 08:42 AM 5.7	11 06:34 AM 5.0	26 08:42 AM 5.7
12:40 PM 1.3	14:50 PM 1.2	12:40 PM 1.3	14:50 PM 1.2	12:40 PM 1.3	14:50 PM 1.2	12:40 PM 1.3	14:50 PM 1.2	12:40 PM 1.3	14:50 PM 1.2	12:40 PM 1.3	14:50 PM 1.2
Th 12:58 PM 3.9	F 01:46 PM 4.8	Th 12:58 PM 3.9	F 01:46 PM 4.8	Th 12:58 PM 3.9	F 01:46 PM 4.8	Th 12:58 PM 3.9	F 01:46 PM 4.8	Th 12:58 PM 3.9	F 01:46 PM 4.8	Th 12:58 PM 3.9	F 01:46 PM 4.8
13:50 PM 1.3	15:46 PM 0.7	13:50 PM 1.3	15:46 PM 0.7	13:50 PM 1.3	15:46 PM 0.7	13:50 PM 1.3	15:46 PM 0.7	13:50 PM 1.3	15:46 PM 0.7	13:50 PM 1.3	15:46 PM 0.7
12 07:22 AM 5.1	27 09:42 AM 5.8	12 07:22 AM 5.1	27 09:42 AM 5.8	12 07:22 AM 5.1	27 09:42 AM 5.8	12 07:22 AM 5.1	27 09:42 AM 5.8	12 07:22 AM 5.1	27 09:42 AM 5.8	12 07:22 AM 5.1	27 09:42 AM 5.8
12:56 PM 1.4	15:50 PM 1.3	12:56 PM 1.4	15:50 PM 1.3	12:56 PM 1.4	15:50 PM 1.3	12:56 PM 1.4	15:50 PM 1.3	12:56 PM 1.4	15:50 PM 1.3	12:56 PM 1.4	15:50 PM 1.3
F 12:58 PM 3.9	Sa 01:46 PM 4.9	F 12:58 PM 3.9	Sa 01:46 PM 4.9	F 12:58 PM 3.9	Sa 01:46 PM 4.9	F 12:58 PM 3.9	Sa 01:46 PM 4.9	F 12:58 PM 3.9	Sa 01:46 PM 4.9	F 12:58 PM 3.9	Sa 01:46 PM 4.9
14:06 PM 1.4	16:46 PM 0.8	14:06 PM 1.4	16:46 PM 0.8	14:06 PM 1.4	16:46 PM 0.8	14:06 PM 1.4	16:46 PM 0.8	14:06 PM 1.4	16:46 PM 0.8	14:06 PM 1.4	16:46 PM 0.8
13 08:10 AM 5.2	28 10:42 AM 5.9	13 08:10 AM 5.2	28 10:42 AM 5.9	13 08:10 AM 5.2	28 10:42 AM 5.9	13 08:10 AM 5.2	28 10:42 AM 5.9	13 08:10 AM 5.2	28 10:42 AM 5.9	13 08:10 AM 5.2	28 10:42 AM 5.9
13:12 PM 1.5	16:50 PM 1.4	13:12 PM 1.5	16:50 PM 1.4	13:12 PM 1.5	16:50 PM 1.4	13:12 PM 1.5	16:50 PM 1.4	13:12 PM 1.5	16:50 PM 1.4	13:12 PM 1.5	16:50 PM 1.4
Sa 12:58 PM 3.9	Su 01:46 PM 5.0	Sa 12:58 PM 3.9	Su 01:46 PM 5.0	Sa 12:58 PM 3.9	Su 01:46 PM 5.0	Sa 12:58 PM 3.9	Su 01:46 PM 5.0	Sa 12:58 PM 3.9	Su 01:46 PM 5.0	Sa 12:58 PM 3.9	Su 01:46 PM 5.0
15:02 PM 1.5	17:46 PM 0.9	15:02 PM 1.5	17:46 PM 0.9	15:02 PM 1.5	17:46 PM 0.9	15:02 PM 1.5	17:46 PM 0.9	15:02 PM 1.5	17:46 PM 0.9	15:02 PM 1.5	17:46 PM 0.9
14 08:58 AM 5.3	29 11:42 AM 6.0	14 08:58 AM 5.3	29 11:42 AM 6.0	14 08:58 AM 5.3	29 11:42 AM 6.0	14 08:58 AM 5.3	29 11:42 AM 6.0	14 08:58 AM 5.3	29 11:42 AM 6.0	14 08:58 AM 5.3	29 11:42 AM 6.0
13:28 PM 1.6	17:50 PM 1.5	13:28 PM 1.6	17:50 PM 1.5	13:28 PM 1.6	17:50 PM 1.5	13:28 PM 1.6	17:50 PM 1.5	13:28 PM 1.6	17:50 PM 1.5	13:28 PM 1.6	17:50 PM 1.5
Su 12:58 PM 3.9	Mo 01:46 PM 5.1	Su 12:58 PM 3.9	Mo 01:46 PM 5.1	Su 12:58 PM 3.9	Mo 01:46 PM 5.1	Su 12:58 PM 3.9	Mo 01:46 PM 5.1	Su 12:58 PM 3.9	Mo 01:46 PM 5.1	Su 12:58 PM 3.9	Mo 01:46 PM 5.1
16:08 PM 1.6	18:46 PM 1.0	16:08 PM 1.6	18:46 PM 1.0	16:08 PM 1.6	18:46 PM 1.0	16:08 PM 1.6	18:46 PM 1.0	16:08 PM 1.6	18:46 PM 1.0	16:08 PM 1.6	18:46 PM 1.0
15 09:46 AM 5.4	30 12:42 PM 6.1	15 09:46 AM 5.4	30 12:42 PM 6.1	15 09:46 AM 5.4	30 12:42 PM 6.1	15 09:46 AM 5.4	30 12:42 PM 6.1	15 09:46 AM 5.4	30 12:42 PM 6.1	15 09:46 AM 5.4	30 12:42 PM 6.1
13:54 PM 1.7	18:50 PM 1.6	13:54 PM 1.7	18:50 PM 1.6	13:54 PM 1.7	18:50 PM 1.6	13:54 PM 1.7	18:50 PM 1.6	13:54 PM 1.7	18:50 PM 1.6	13:54 PM 1.7	18:50 PM 1.6
Mo 12:58 PM 3.9	Tu 01:46 PM 5.2	Mo 12:58 PM 3.9	Tu 01:46 PM 5.2	Mo 12:58 PM 3.9	Tu 01:46 PM 5.2	Mo 12:58 PM 3.9	Tu 01:46 PM 5.2	Mo 12:58 PM 3.9	Tu 01:46 PM 5.2	Mo 12:58 PM 3.9	Tu 01:46 PM 5.2
17:14 PM 1.7	19:46 PM 1.1	17:14 PM 1.7	19:46 PM 1.1	17:14 PM 1.7	19:46 PM 1.1	17:14 PM 1.7	19:46 PM 1.1	17:14 PM 1.7	19:46 PM 1.1	17:14 PM 1.7	19:46 PM 1.1
16 10:34 AM 5.5	31 01:42 PM 6.2	16 10:34 AM 5.5	31 01:42 PM 6.2	16 10:34 AM 5.5	31 01:42 PM 6.2	16 10:34 AM 5.5	31 01:42 PM 6.2	16 10:34 AM 5.5	31 01:42 PM 6.2	16 10:34 AM 5.5	31 01:42 PM 6.2
14:10 PM 1.8	19:50 PM 1.7	14:10 PM 1.8	19:50 PM 1.7	14:10 PM 1.8	19:50 PM 1.7	14:10 PM 1.8	19:50 PM 1.7	14:10 PM 1.8	19:50 PM 1.7	14:10 PM 1.8	19:50 PM 1.7
Tu 12:58 PM 3.9	W 01:46 PM 5.3	Tu 12:58 PM 3.9	W 01:46 PM 5.3	Tu 12:58 PM 3.9	W 01:46 PM 5.3	Tu 12:58 PM 3.9	W 01:46 PM 5.3	Tu 12:58 PM 3.9	W 01:46 PM 5.3	Tu 12:58 PM 3.9	W 01:46 PM 5.3
18:20 PM 1.8	20:46 PM 1.2	18:20 PM 1.8	20:46 PM 1.2	18:20 PM 1.8	20:46 PM 1.2	18:20 PM 1.8	20:46 PM 1.2	18:20 PM 1.8	20:46 PM 1.2	18:20	